

## FEATURES AND BENEFITS

**Smooth, rounded bowl - lift professional design**  
Ideal for heavy loads / use and easy to clean.

**Professional grade, high efficiency motor with direct drive**  
Quiet and powerful.

**Full metal body construction**  
High precision metal gears and metal control knobs.

**Electronic Speed Sensor**  
Maintains selected speed, regardless of the weight of the load.

**Single attachment hub**  
Easy usage with a wide choice of optional accessories.

**Price:**  
XX,XXX

**4.8 L Bowl - Lift Stand Mixer:**  
XX,XXX

## COLOUR PALETTE

### 4.8 L BOWL - LIFT STAND MIXER



WHITE



GREY

### 4.8 L BOWL - LIFT STAND MIXER



WHITE



EMPIRE  
RED

# KitchenAid®

©/™ ©2014 KitchenAid. All rights reserved.

# KitchenAid®



[www.kitchenaidxxxx.com](http://www.kitchenaidxxxx.com)  
[info@kitchenaidxxxx.com](mailto:info@kitchenaidxxxx.com)  
[www.facebook.com/KitchenAidxxxx](https://www.facebook.com/KitchenAidxxxx)  
[www.twitter.com/KitchenAidxxxx](https://www.twitter.com/KitchenAidxxxx)  
[www.youtube.com/KitchenAidxxxx](https://www.youtube.com/KitchenAidxxxx)  
Toll free number: xxxx xxxx xxx

**4.8 L HEAVY DUTY BOWL - LIFT  
STAND MIXER**  
KPM50



## BOWL LIFT STAND MIXER

The KitchenAid Bowl - Lift Stand Mixer has a big appetite for getting the job done. It's no - nonsense, professional - style design delivers extra power, strength, and capacity to handle multiple bread batches, big - size recipes and your most demanding kitchen chores. Dedicated bakers and cooks will appreciate such a strong work ethic. Whether the menu du jour includes artisan breads, homemade pasta or a three tier wedding cake, an easy turn of the lift lever or quick connection to the power hub gets the job done. Best of all, while your KitchenAid Bowl - Lift Stand Mixer does all the heavy lifting, you take all the credit.

## STANDARD ACCESSORIES



### WIRE WHISK

Used for incorporating air into eggs, egg whites, whipping cream and dips (such as mayonnaise).



### DOUGH HOOK

Used for mixing and kneading yeast dough, such as bread, pizza dough and pasta dough.



### FLAT BEATER

Used for heavy mixtures, such as cakes, frostings, cookies and mashed potatoes.



### 4.8 L BOWL

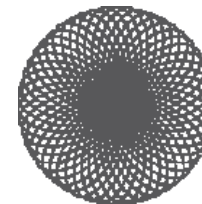
Polished stainless steel bowl with ergonomic handle.



### POURING SHIELD

1 piece, dual-purpose accessory that helps prevent splashing. The pouring spout allows you to add ingredients evenly whilst mixing.

## PLANETARY ACTION



67 - Point Planetary Mixing Action means 67 different touchpoints per rotation around the bowl for thorough ingredient incorporation. The beater, dough hook or wire whip rotates around the bowl, giving incredible bowl coverage for comprehensive mixing.

## POWER HUB



The power hub turns the stand mixer into a culinary center. With more than 12 optional attachments that fit into this single power hub, use the power of the stand mixer to make fusilli pasta from scratch, shred a block of parmesan cheese in seconds and so much more.

## TECHNICAL SPECIFICATIONS

Wattage	315 W
Motor type	Alternative Current (AC) with Direct Drive
Peak output motor	0.26 HP
Voltage	220 - 240 V
Frequency	50 / 60 HZ
R.P.M. (Speed 1-10)	60 to 265 RPM
Removable bowl capacity	4.8 L
Material body	Die-cast zinc
Type speed control	Mix (Mechanic / Electronic)
Dimensions product	41.1X33.8X26.4 cm (hxwxd)
Net weight	12 Kg
Max. dough capacity	1 kg (8 cups) of all purpose flour 800 g (6 cups) of whole wheat flour

## FEATURES AND BENEFITS

### Smooth, rounded tilt-head design

Elegant, easy usage and cleaning.

### 4.8 L stainless steel bowl

To prepare small to large quantities of food.

### Direct drive

Reliable and long lasting.

### Full metal construction

Robust, stable and durable.

### 59 - point planetary mixing action

Spirals to 59 different touch - points within the bowl for quick, complete mixing and the highest beater - to - bowl coverage in the industry.

### Single attachment hub

Easy usage with a wide choice of optional accessories.

### Price:

#### 4.8 L Tilt Head Artisan Series Stand Mixer:

MRP ₹ 39,990 (incl of all taxes)

#### 4.8 L Tilt Head Artisan Design Series Stand Mixer:

MRP ₹ 42,990 (incl of all taxes)

# KitchenAid®

# KitchenAid®

©/™ ©2013 KitchenAid. All rights reserved.



[www.kitchenaidindia.com](http://www.kitchenaidindia.com)  
[info@kitchenaidindia.com](mailto:info@kitchenaidindia.com)  
[www.facebook.com/KitchenAidIndia](https://www.facebook.com/KitchenAidIndia)  
[www.twitter.com/KitchenAidIND](https://www.twitter.com/KitchenAidIND)  
[www.youtube.com/KitchenAidIndia](https://www.youtube.com/KitchenAidIndia)  
Toll free number: 1800 4190 790

4.8 L ARTISAN TILT - HEAD  
STAND MIXER



## TILT HEAD STAND MIXER

The stamp of a cook's personality expresses itself in the creation of sensuous culinary experiences, ones that encompass all the senses, including the eye. KitchenAid considers its mixers as a creative extension of the cook's hands, providing optimal control at a professional level that matches handmade results. This Artisan Tilt - Head Stand Mixer is all this in an iconic design.

*KitchenAid, the best selling mixer brand in the world.\**

\*Source Euromonitor International Limited, retail volume sales in units for 2012.

## STANDARD ACCESSORIES



### WIRE WHISK

Used for incorporating air into eggs, egg whites, whipping cream and dips (such as mayonnaise).



### DOUGH HOOK

Used for mixing and kneading yeast dough, such as bread, pizza dough and pasta dough.



### FLAT BEATER

Used for heavy mixtures, such as cakes, frostings, cookies and mashed potatoes.



### 4.8 L BOWL

Polished stainless steel bowl with ergonomic handle.



### POURING SHIELD

1 piece, dual - purpose accessory that helps prevent splashing. The pouring spout allows you to add ingredients evenly whilst mixing.

## TECHNICAL SPECIFICATIONS

Wattage	300 W
Motor type	Alternative Current (AC) with Direct Drive
Peak output motor	0.3 HP
Voltage	220 - 240 V
Frequency	50 / 60 HZ
R.P.M. (Speed 1-10)	58 to 220
Material body	Die-cast zinc
Type speed control	Hybrid electronic
Dimensions product	36.2X22.2X34.3 cm (hxwxd)
Dimensions packaging	42.6X28.9X41.3 cm (hxwxd)
Net weight	10.6 Kg
Gross weight	12.4 Kg
Max. dough capacity	1 kg (8 cups) of all purpose flour 800 g (6 cups) of whole wheat flour

## COLOUR PALETTE

### 4.8 L TILT HEAD ARTISAN SERIES STAND MIXER



WHITE

PINK

EMPIRE  
RED

TANGERINE

ONYX  
BLACK

### 4.8 L TILT HEAD ARTISAN DESIGN SERIES STAND MIXER



SUGAR  
PEARL

CANDY  
APPLE

RASPBERRY  
ICE

## FEATURES AND BENEFITS

**Smooth rounded bowl-lift professional design**  
Ideal for heavy loads/use and easy to clean.

**6.9 L stainless steel bowl**  
Easily handles very large quantities of food.

**1.3 HP high efficiency motor with direct drive**  
Quiet and powerful.

**Full metal body construction, high precision metal gears and metal control knobs**  
Stable, quiet and durable.

**All stainless steel standard accessories**  
Robust, durable and dishwasher-safe.

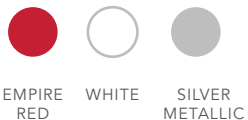
**Original planetary action**  
Fast and thorough mixing.

**Single attachment hub**  
Easy usage with a wide choice of optional accessories.

**Safety features**  
Wire Guard and Stop Switch lend increased safety.

Price: XX,XXX

## COLOUR PALETTE



# KitchenAid®

©/™ ©2014 KitchenAid. All rights reserved.

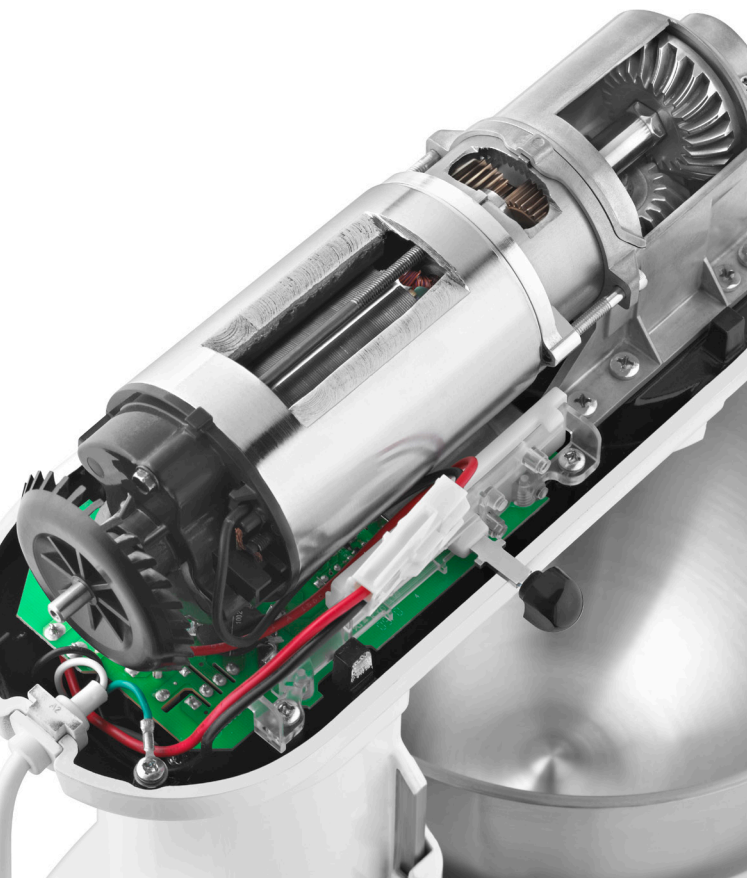
# KitchenAid®



[www.kitchenaidxxxx.com](http://www.kitchenaidxxxx.com)  
[info@kitchenaidxxxx.com](mailto:info@kitchenaidxxxx.com)  
[www.facebook.com/KitchenAidxxxx](https://www.facebook.com/KitchenAidxxxx)  
[www.twitter.com/KitchenAidxxxx](https://www.twitter.com/KitchenAidxxxx)  
[www.youtube.com/KitchenAidxxxx](https://www.youtube.com/KitchenAidxxxx)  
Toll free number: xxxx xxxx xxx

**6.9L PROFESSIONAL  
BOWL-LIFT STAND MIXER  
5KSM7990**





## 6.9L PROFESSIONAL BOWL-LIFT STAND MIXER

6.9L Professional Bowl-Lift Stand Mixer is characterized by a smooth rounded bowl-lift professional design. With 1.3 HP high efficiency motor with direct drive, it is both quiet and powerful: indeed it is ideal for heavy loads and large quantities of food. Thanks to its full metal body construction, the high precision metal gears, the wire guard and the stop switch, it guarantees stability, durability, robustness and safety also in a commercial environment. It is indeed KitchenAid's best performing Stand Mixer.

## STANDARD ACCESSORIES

All the accessories are made of stainless steel and are dishwasher safe.



### ELLIPTICAL 11-WIRE WHISK

11-wire whisk has an elliptical shaped design to maximize bowl coverage, allowing large capacity whipping just as quickly and easily as smaller volumes.



### FLAT BEATER

Used for normal to heavy mixtures such as cakes, frostings, cookies and mashed potatoes.



### POWERKNEAD™ SPIRAL DOUGH HOOK

Used for mixing and kneading yeast dough such as bread, pizza dough and pasta dough.



### 6.9L BOWL

Polished 6.9L Bowl can easily handle large quantities of food and has a "J" Style handle for easy handling and storage.



### REMOVABLE POURING CHUTE

Used to easily pour in ingredients even while the mixing is on.



### WIRE GUARD AND STOP SWITCH

For increased safety in a commercial environment.

## TECHNICAL SPECIFICATIONS

Wattage	325 W
Motor type	DC (Direct current) with Direct Drive
Max. output motorpower (Horsepower)	1.3 HP
Voltage	220 - 240 V
Frequency	50 / 60 Hz
Revolutions per minute (Speed 1 - 10)	40 to 200 RPM
Bowl capacity	6.9 L
Material body	Die-cast zinc
Speed control type	Electronic
Product dimensions (HxWxD)	41.9 × 28.7 × 31 cm
Net weight	13 kg

## MAX CAPACITY PER FOOD TYPE

### Max flour advised

All-purpose flour	2.2 kg (16 cups)
Whole wheat flour	1.75 kg (14 cups)
Pie crust: grams of flour	1150 g
Egg white	19 (medium)
Whipped cream	1.9 L
Cake	4.5 kg
Bread dough (stiff yeast dough)	3.8 kg
Mashed potatoes	3.6 kg
Cookies (standard 5.1 cm - 2 inch cookie)	168 units (14 dozen)

# KitchenAid®

# KitchenAid®

®/™ ©2014 KitchenAid. All rights reserved.



[www.kitchenaidxxxx.com](http://www.kitchenaidxxxx.com)  
[info@kitchenaidxxxx.com](mailto:info@kitchenaidxxxx.com)  
[www.facebook.com/KitchenAidxxxx](https://www.facebook.com/KitchenAidxxxx)  
[www.twitter.com/KitchenAidxxxx](https://www.twitter.com/KitchenAidxxxx)  
[www.youtube.com/KitchenAidxxxx](https://www.youtube.com/KitchenAidxxxx)  
Toll free number: xxxx xxxx xxx

**7 - SPEED HAND MIXER**  
**5KHM720A**



## 7 - SPEED HAND MIXER

Power. Versatility. All in the palm of your hand, KitchenAid® Hand Mixer is one tough cookie! It brings the whisk to where the action is. Intuitive design features, like Clean Touch control pad, keep the kitchen chaos from spreading. Adjusting speeds is now as tidy and simple as a press of a button. With the KitchenAid® Hand Mixer you'll be able to conquer it all, we might add, with one hand tied behind your back.

Price: XX,XXX

## COLOUR PALETTE



ONYX BLACK    EMPIRE RED    PINK    WHITE

## FEATURES AND BENEFITS

### Clean Touch™ control pad

Allows you to increase or decrease mixing speed at the touch of a button.

### Soft-Start electronic control

Prevents splattering of ingredients

### Electronic mixing sensor

Automatically adjusts mixing speed to the resistance of the load, to maintain smooth and consistent operation.

### 7 mixing speeds

Allows precise control when mixing. Included are three slow stir speeds and one high whip speed that offer versatility when preparing your favorite recipes.

### Air vents

Prevents clogging from batter and other mixtures.

## STANDARD ACCESSORIES



Convenient accessory bag

2 Stainless steel turbo Beater™ accessories



8½ Inch (212 cm) long liquid blender accessory



## TECHNICAL SPECIFICATIONS

Wattage	70 W
Motor type	DC (direct current)
Voltage	220 - 240 V
Frequency	50 / 60 Hz
Material body	Plastic
Product dimensions (HxWxD)	16.3 × 19.1 × 8.9 cm
Net weight	1.2 kg



# KitchenAid®

# KitchenAid®

®/™ ©2014 KitchenAid. All rights reserved.



[www.kitchenaidxxxx.com](http://www.kitchenaidxxxx.com)  
[info@kitchenaidxxxx.com](mailto:info@kitchenaidxxxx.com)  
[www.facebook.com/KitchenAidxxxx](https://www.facebook.com/KitchenAidxxxx)  
[www.twitter.com/KitchenAidxxxx](https://www.twitter.com/KitchenAidxxxx)  
[www.youtube.com/KitchenAidxxxx](https://www.youtube.com/KitchenAidxxxx)  
Toll free number: xxxx xxxx xxx

**0.8 MM PROFESSIONAL  
NONSTICK BAKEWARE**



## ASSORTMENT



9" Pie Pan # KBNSO09PI



12" thin crust pizza pan  
# KBNSO12TZ

## FEATURES AND BENEFITS

### 0.8mm aluminized steel

Professional weight aluminized steel resists warping up to 230 C and gives even heating for the best browning results.

### Drawn & folded design

Perfectly squared corners and durable drawn design for lasting and professional results.

### ILEG non-stick coating

PFOA & PTFE free 3 coat nonstick system provides the best long - lasting nonstick performance and ensures baked goods release easily from the surface.

### Dishwasher durable

Easy clean - up, rust resistant performance.



6-Cavity Regular-Sized Muffin Pan (Set of 2)  
# KBNSS06MF



12" Deep Dish Pizza Pan # KBNSO12DZ

## FEATURES AND BENEFITS

**Cordless hand blender with rechargeable 12V li-ion battery**

No wires, for greater freedom.

**3 interchangeable stainless steel bell blades with removable pan guard**

Allows for crushing, blending, chopping and frothing without damaging cookware.

**2 twist-lock stainless steel blending arms**

For use even in deep pots and pitchers.

**Choppers, whisk and 1 L BPA-free pitcher**

A range of extras helps expand your culinary prowess and possibilities.

**Powerful 5-speed DC motor with LED-indicator**

Quiet, efficient and controlled performance while in use; light indicator displays speed.

**Ergonomic design with rear hook**

Easy to handle, convenient hanging storage feature.

**Useful storage case for attachments**

Store accessories safely and conveniently.

**Price: XX,XXX**

## COLOUR PALETTE



CANDY  
APPLE



ONYX  
BLACK



MYSTIC  
SILVER



FROSTED  
PEARL

# KitchenAid®

©/™ ©2014 KitchenAid. All rights reserved.

# KitchenAid®



**THE PRO LINE**  
**5-SPEED CORDLESS HAND**  
**BLENDER WITH RECHARGABLE**  
**LITHIUM ION BATTERY**  
**5KHB3581**

[www.kitchenaidxxxx.com](http://www.kitchenaidxxxx.com)  
[info@kitchenaidxxxx.com](mailto:info@kitchenaidxxxx.com)  
[www.facebook.com/KitchenAidxxxx](https://www.facebook.com/KitchenAidxxxx)  
[www.twitter.com/KitchenAidxxxx](https://www.twitter.com/KitchenAidxxxx)  
[www.youtube.com/KitchenAidxxxx](https://www.youtube.com/KitchenAidxxxx)  
Toll free number: xxxx xxxx xxx

KISBRHB1013\_01



## CORDLESS HAND BLENDER

Where simplicity meets sophistication. Streamlined and powerful, the Cordless Hand Blender is a busy cook's dream: this is a handy, rechargeable blender, free of wires. A whirlwind of activity in the kitchen? No problem. Brisky dance from dish to dish, enjoying the freedom and creativity of wireless blending.

## STANDARD ACCESSORIES



### 12V LI-ION BATTERY & CHARGER

This rechargeable battery, when fully charged, provides 6 hours and more of high performance blending.



### S-BLADE

Use for blending, crushing, pureeing, preparing smoothies, milkshakes, cooked vegetables, soups, baby food, frostings and crushing ice.



### STAR BLADE

Use for shredding cooked meats and mincing.



### FROTHING BLADE

Use for frothing milk (frappes, cappuccino) and mixing cake, pancake or muffin batter.



### PAN GUARD

Snap the pan guard onto the interchangeable bell blades to protect your cookware during use.



### 3 BELL GUARDS

Protect the interchangeable bell blades when not in use.



### REMOVABLE 8" & 13" BLENDING ARMS

Use for blending ingredients in deeper pots or pitchers, even while cooking.



### WHISK

Use of whisking, emulsifying and aerating egg whites, mayonnaise, vinaigrette and mousse.



### CHOPPER (600 ml)

Perfect for small chopping jobs, like herbs, nuts, and vegetables. Chopper includes a bowl, blade and chopper adapter.



### GRADUATED PITCHER WITH SPECIAL LID

1 L BPA-free (safe plastic) pitcher with a convenient handle and no-splash lid.



### STORAGE CASE

Keeps accessories organized and protected.





# Processing

**KitchenAid**

Best  
Choice

## Table Top Mixer

What sets the Kitchen Aid mixer apart from domestic mixers?

- Professional mixer designed for commercial use.
- All metal construction.
- Driven by gears not, a belt - therefore maintains constant speed even when large quantities are added to the bowl.
- Machine has chip and stain resistant finish.
- Uses a lift system i.e. mixer's head does not tilt, promoting mixer stability.
- Extensive life, quality and safety tests show a 20 year life span.



### SPECIFICATIONS - PMK0005

MOTOR: 0.32kW  
DIMENSIONS: 410 x 260 x 340mm  
WEIGHT: 12.3kg

### ORDER CODE:

PMK0005 • PLANETARY MIXER KITCHENAID – 5Lt

A must for any professional kitchen; reliable, quiet and durable with unsurpassed performance. Comes standard with stainless steel mixing bowl, whisk, dough hook and beater attachment.

## 10Lt Planetary Cake Mixer

### SPECIFICATIONS - PMK0010

CAPACITY: 10Lt  
VOLTAGE: 220V 50Hz  
POWER: 0.37kw  
DIMENSIONS: 470 x 370 x 600mm  
PLANETARY SPEED: 80 / 176 / 319rpm  
WEIGHT: 136kg

### ORDER CODES:

PMK0010 • PLANETARY MIXER - 10Lt

All mixers come standard with dough hook, whisk and flat beater. Ideal for small bakeries and home industries.





## Floor Standing Planetary Mixer - No Hub

**ANKOR**

### **SPECIFICATIONS - PMF0020**

CAPACITY: 20Lt  
VOLTAGE: 220V 50Hz  
POWER: 0.37kW  
DIMENSIONS: 530 x 480 x 810mm  
PLANETARY SPEED: 102 / 183 / 320rpm  
WEIGHT: 95kg

### **SPECIFICATIONS - PMF2020**

CAPACITY: 20Lt  
VOLTAGE: 220V 50Hz  
POWER: 1.17kW  
DIMENSIONS: 670 x 560 x 910mm  
PLANETARY SPEED: 197 / 371 / 462rpm  
WEIGHT: 83kg

### **SPECIFICATIONS - PMF0040**

CAPACITY: 40Lt  
VOLTAGE: 220V 50Hz  
POWER: 1.0kW  
DIMENSIONS: 650 x 550 x 1070mm  
PLANETARY SPEED: 99 / 176 / 320rpm  
WEIGHT: 180kg

### **SPECIFICATIONS - PMF0060**

CAPACITY: 40Lt  
VOLTAGE: 280V - 3 phase - 50Hz  
POWER: 1.87kW  
DIMENSIONS: 720 x 630 x 1300mm  
PLANETARY SPEED: 99 / 176 / 320rpm  
WEIGHT: 450kg



### **ORDER CODES:**

- PMF0020 • PLANETARY MIXER FLOOR STANDING – 20Lt (NO HUB)
- PMF2020 • PLANETARY MIXER FLOOR STANDING – 20Lt (NO HUB) - ECONO
- PMF0040 • PLANETARY MIXER FLOOR STANDING – 40Lt (NO HUB)
- PMF0060 • PLANETARY MIXER FLOOR STANDING – 60Lt (NO HUB)

All mixers come standard with dough hook, whisk and flat beater. Ideal for small bakeries and home industries.

# Processing

## Floor Standing Planetary Mixer - With Hub

**ANKOR**

### SPECIFICATIONS - PMF1020

CAPACITY: 20Lt  
 VOLTAGE: 220V 50hz  
 POWER: 0.37kW  
 DIMENSIONS: 650 x 550 x 850mm  
 PLANETARY SPEED: 106 / 196 / 320rpm  
 WEIGHT: 98kg

### SPECIFICATIONS - PMF1030

CAPACITY: 30Lt  
 VOLTAGE: 220V 50hz  
 POWER: 0.75kW  
 DIMENSIONS: 655 x 568 x 1100mm  
 PLANETARY SPEED: 99 / 176 / 320rpm  
 WEIGHT: 180kg

### SPECIFICATIONS - PMF1040

CAPACITY: 40Lt  
 VOLTAGE: 220V 50hz  
 POWER: 1.12kW  
 DIMENSIONS: 720 x 720 x 1300mm  
 PLANETARY SPEED: 99 / 176 / 320rpm  
 WEIGHT: 250kg

### SPECIFICATIONS - PMF1060

CAPACITY: 60Lt  
 VOLTAGE: 380V - 3 PHASE - 50hz  
 POWER: 1.87kw  
 DIMENSIONS: 720 x 630 x 1300mm  
 PLANETARY SPEED: 99 / 176 / 320rpm  
 WEIGHT: 450kg

### ORDER CODES:

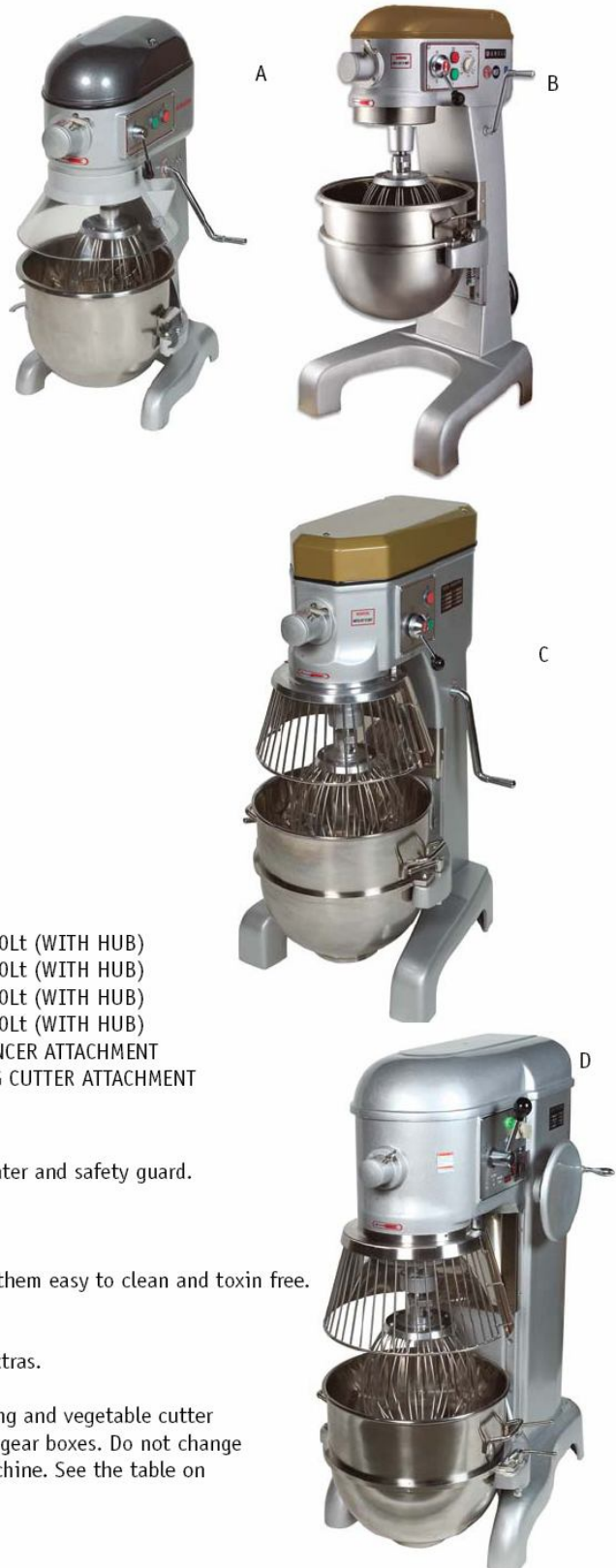
PMF1020 A PLANETARY MIXER FLOOR STANDING - 20Lt (WITH HUB)  
 PMF1030 B PLANETARY MIXER FLOOR STANDING - 30Lt (WITH HUB)  
 PMF1040 C PLANETARY MIXER FLOOR STANDING - 40Lt (WITH HUB)  
 PMF1060 D PLANETARY MIXER FLOOR STANDING - 60Lt (WITH HUB)  
 PMF2001 • PLANETARY MIXER FLOOR STANDING MINCER ATTACHMENT  
 PMF2007 • PLANETARY MIXER FLOOR STANDING VEG CUTTER ATTACHMENT

All mixers come standard with dough hook, whisk, flat beater and safety guard.

### Special Features:

- Mixers are coated with long lasting enamel which make them easy to clean and toxin free.
- Offers noiseless operation and high torque motors.
- Hardened steel alloy gears with 3-speed transmission.
- Mincer and vegetable cutter attachments are optional extras.

Ideal for pizzeria, bakery and institutional catering. Mincing and vegetable cutter attachments available as an optional extra. Hard long life gear boxes. Do not change gears while the motor is running. Do not overload the machine. See the table on page 73 for max product loading.



## Spiral Dough Mixers



### **SPECIFICATIONS - DMS0018**

CAPACITY: 18kg / 22Lt  
VOLTAGE: 220V  
POWER: 0.75kW  
DIMENSIONS: 390 x 670 x 620mm  
DOUGH WEIGHT: 18kg  
BOWL DIAMETER: 360mm  
WEIGHT: 54kg

### **SPECIFICATIONS - DMS0025**

CAPACITY: 25kg / 33Lt  
VOLTAGE: 220V  
POWER: 1.1kW  
DIMENSIONS: 430 x 730 x 710mm  
DOUGH WEIGHT: 25kg  
BOWL DIAMETER: 400mm  
WEIGHT: 75kg

### **SPECIFICATIONS - DMS0038**

CAPACITY: 38kg / 42Lt  
VOLTAGE: 220V  
POWER: 1.5kW  
DIMENSIONS: 480 x 800 x 730mm  
DOUGH WEIGHT: 38kg  
BOWL DIAMETER: 450mm  
WEIGHT: 114kg

### **SPECIFICATIONS - DMS0050**

CAPACITY: 50kg / 62Lt  
VOLTAGE: 380V  
POWER: 2.2kW  
DIMENSIONS: 530 x 920 x 940mm  
DOUGH WEIGHT: 50kg  
BOWL DIAMETER: 500mm  
WEIGHT: 150kg

### **DESCRIPTION OF MEASUREMENT - BOWL CAPACITY**

- DMS0018** • DOUGH MIXER SPIRAL – 18kg / 22Lt
- DMS0025** • DOUGH MIXER SPIRAL – 25kg / 33Lt
- DMS0038** • DOUGH MIXER SPIRAL – 38kg / 42Lt
- DMS0050** • DOUGH MIXER SPIRAL – 50kg / 62Lt

Ideal for small bakeries and pizzerias. All units are supplied on castors for easy cleaning and manoeuvrability.

- These mixers have a fixed head and mixing bowl.
- The shape of the spiral enables a perfectly mixed dough to be obtained in a few minutes.
- Silent transmission system (single speed).
- All the machines are provided with a dough-breaker bar.
- Stainless steel protection grate for increased safety.
- Timer function.





## STAND MIXER ATTACHMENTS

one mixer  
over 12 attachments  
endless possibilities

**KitchenAid**<sup>®</sup>  
FOR THE WAY IT'S MADE.<sup>®</sup>



No matter the recipe or kitchen technique, chances are there is an optional attachment for your KitchenAid® Stand Mixer that makes it faster, easier and with more possibilities.

Imagine the potential—herbed fettuccine created with the Pasta Attachment, polenta fresh from your Grain Mill, or made-from-scratch bratwurst created with the Sausage Stuffer and Food Grinder attachments.

Taste the quality of truly fresh ingredients prepared on the spot, with ease and care.



Slicer/Shredder



Fruit/Vegetable Strainer



Citrus Juicer



Food Tray

## LIMITLESS CULINARY POSSIBILITIES FROM A SINGLE MIXER



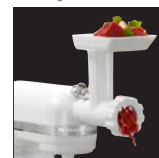
Grain Mill



Gourmet Pasta Press



Sausage Stuffer



Food Grinder



Pasta Roller & Cutter





## TABLE OF CONTENTS

ATTACHMENT	PAGE
Ice Cream Maker.....	6
Citrus Juicer .....	6
Food Grinder .....	8
Sausage Stuffer Kit .....	8
Grain Mill .....	10
Rotor Slicer/Shredder.....	10
Ravioli Maker.....	12
Pasta Roller.....	12
Gourmet Pasta Press .....	14
Pasta Excellence Set.....	14
Capellini and Lasagnette Pasta Roller Fettuccine and Spaghetti Cutters Ravioli Maker	
Pasta Cutter Set .....	16
Pasta Roller Capellini and Lasagnette Cutters	
Pasta Roller & Cutter Set.....	16
Pasta Roller Fettuccine and Spaghetti Cutters	
Mixer Attachment Pack 1 .....	18
Food Grinder Fruit/Vegetable Strainer Rotor Slicer/Shredder	
Mixer Attachment Pack 2 .....	18
Food Grinder Rotor Slicer/Shredder Sausage Stuffer	
Mixer Attachment Pack 3 .....	20
Citrus Juicer Food Grinder Sausage Stuffer Food Tray	
Fruit/Vegetable Strainer Set .....	20
Fruit/Vegetable Strainer Food Grinder	
Food Tray.....	22
Fruit/Vegetable Strainer Parts .....	22



INDIVIDUAL ATTACHMENTS

## ICE CREAM MAKER



Model KICA0WH

- Makes up to 2 quarts of frozen dessert



ICE CREAM, SHERBET, SORBET, GELATO, FROZEN YOGURT



SUNDAES, BANANA SPLITS, SHAKES, MALTS AND FLOATS



PIE À LA MODE, PARFAITS, BAKED ALASKA AND ICE CREAM CAKES



## CITRUS JUICER



Model JE

- Extracts juice from small limes to large grapefruit with minimum effort



ORANGE & GRAPEFRUIT JUICE, LEMONADE & PUNCH



MARGARITAS, MIMOSAS, MOJITOS, DAIQUIRIS & SANGRIA



SAUCES, SALAD DRESSINGS, FLAVORINGS, ITALIAN ICE & DESSERTS



Stand Mixer pictured sold separately.



INDIVIDUAL ATTACHMENTS

## FOOD GRINDER



Model FGA

- Includes Coarse and Fine Plates, and 4-Bladed Knife



SALSAS, CHUTNEYS, JAMS AND PRESERVES



HAMBURGERS, MEATLOAF AND MEATBALLS



PÂTÉS, SPREADS, SANDWICH FILLINGS, HORS D'OEUVRES, NUTS



## SAUSAGE STUFFER KIT



Model SSA

- Use with FGA
- 3/8" tube for small links, 5/8" tube for large links



BRATWURST, KIELBASA, ITALIAN SAUSAGE, BREAKFAST LINKS



VENISON, SAUSAGE, CHORIZO, FRANKFURTERS



QUICHE, JAMBALAYA



Stand Mixer pictured sold separately.





INDIVIDUAL ATTACHMENTS

## GRAIN MILL



### Model KGM

- Easily grind fresh wheat, corn, oats, rye, rice, buckwheat and other low moisture, non-oily grains
- 12 grind levels from very coarse to a fine grind



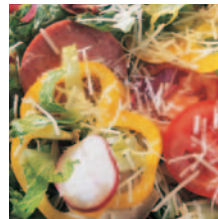
GRIND WHEAT, OATS, BARLEY, RICE, RYE, BUCKWHEAT AND MILLET FOR SPECIALTY BREADS



COOKED CEREALS, GRANOLA AND WHOLESOME BABY FOODS



## ROTOR SLICER/SHREDDER



### Model RVSA

- Includes 2 Slicing Cones and 2 Shredding Cones



SHREDDED CHEESES, FOR PIZZA, SALADS AND CASSEROLES



SLICED MEATS, VEGETABLES AND FRUITS FOR STIR FRY, PIZZA, SALADS AND SANDWICHES



SHREDDED CABBAGE FOR COLE SLAW, COCONUT AND CARROTS FOR DESSERTS



Stand Mixer pictured sold separately.



PASTA ATTACHMENTS

RAVIOLI MAKER



Model KRAV

- Use with KPSA
- Wide roller creates 3 rows of large-pocket ravioli



RAVIOLI FILLED WITH YOUR FAVORITE FILLING



FRIED RAVIOLI APPETIZERS OR SWEET STUFFED DESSERT RAVIOLI



PASTA ROLLER



Model KPSA

- Use with KPCA & KRAV
- Roll pasta dough to the perfect thickness



Stand Mixer pictured sold separately.





### PASTA SETS:

**KPEXTA** gourmet pasta press  
six interchangeable plates

**KPEX** pasta excellence set  
pasta roller (KPSA)  
capellini & lasagnette cutters  
(KPCA)  
fettuccine and spaghetti cutters  
(KPRI)  
ravioli maker (KRAV)

**KPCA** pasta cutter set (use with KPSA)  
capellini & lasagnette cutters

**KPRI** pasta roller & cutter set  
pasta roller (KPSA)  
capellini & lasagnette cutters

## GOURMET PASTA PRESS



### Model KPEXTA

- Six interchangeable pasta plates
- Storage case for pasta plates



**LARGE MACARONI PLATE**  
FOR TUBE-SHAPED PASTA  
WITH RIDGES



**SPAGHETTI PLATE TO**  
MAKE LONG, THIN,  
ROUND STRANDS



**FUSILLI PLATE**  
FOR SPIRAL  
SHAPED PASTA



## PASTA EXCELLENCE SET



### Model KPEX

- 6-piece chrome-plated metal set
- Includes Pasta Roller, Capellini & Lasagnette Cutters, Fettuccine & Spaghetti Cutters, Ravioli Maker



**6" PASTA SHEETS FOR**  
LASAGNA, RAVIOLI,  
PIEROGIES, WONTON  
WRAPPERS AND PASTRIES



**FETTUCCINE, EGG**  
NOODLES AND  
RICE NOODLES



**SPAGHETTI,**  
SPECIALTY GRAIN AND  
FLAVORED PASTAS





PASTA SETS

## PASTA CUTTER SET



Model KPCA

- Use with KPSA
- Chrome-plated metal set
- Includes Lasagnette Cutter and Capellini Cutter



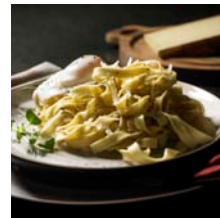
FETTUCCHINE AND  
EGG NOODLES



SPAGHETTI AND  
ANGEL HAIR PASTAS



## PASTA ROLLER & CUTTER SET



Model KPRA

- 3-piece chrome-plated metal set
- Includes Pasta Roller, Fettuccine Cutter and Spaghetti Cutter



6" PASTA SHEETS FOR  
LASAGNA, RAVIOLI,  
PIEROGIES, WONTON  
WRAPPERS AND PASTRIES



FETTUCCHINE, EGG  
NOODLES AND  
RICE NOODLES



SPAGHETTI,  
SPECIALTY GRAIN AND  
FLAVORED PASTAS



Stand Mixer pictured sold separately.



## ATTACHMENT MULTI-PACKS

**FPPA** food grinder (FGA)  
fruit/vegetable strainer (FVSP)  
rotor slicer/shredder (RVSA)

**KGSSA** food grinder (FGA)  
rotor slicer/shredder (RVSA)  
sausage stuffer kit (SSA)

**KN12AP** citrus juicer (JE)  
food grinder (FGA)  
food tray (FT)  
sausage stuffer kit (SSA)

**FVSFGA** fruit/vegetable strainer (FVSP)  
food grinder (FGA)

## MIXER ATTACHMENT PACK 1



### Model FPPA

- Grind, strain, slice and shred with ease
- Includes Food Grinder, Fruit/Vegetable Strainer and Rotor Slicer/Shredder



HAMBURGERS,  
MEATLOAF AND  
MEATBALLS



HUMMUS, PUREED  
SOUPS, HEALTH DRINKS,  
CARROT JUICE



SHREDDED CABBAGE FOR  
COLE SLAW, COCONUT AND  
CARROTS FOR DESSERTS



## MIXER ATTACHMENT PACK 2



### Model KGSSA

- Grind, slice and shred, and stuff homemade sausage
- Includes Food Grinder, Rotor Slicer/Shredder and Sausage Stuffer



MEATBALLS, MEATLOAF,  
PÂTÉS, SPREADS,  
SANDWICH FILLINGS



SLICED MEATS  
AND VEGETABLES,  
SHREDDED CHEESES



BRATWURST, KIELBASA,  
ITALIAN SAUSAGE,  
BREAKFAST LINKS





ATTACHMENT MULTI-PACKS

## MIXER ATTACHMENT PACK 3



Model KN12AP

- Extract citrus juices, grind, and stuff homemade sausage
- Includes Citrus Juicer, Food Grinder, Sausage Stuffer and Food Tray



ORANGE & GRAPEFRUIT JUICE, LEMONADE & PUNCH



HAMBURGERS, MEATLOAF AND MEATBALLS



BRATWURST, KIELBASA, ITALIAN SAUSAGE, BREAKFAST LINKS



## FRUIT/VEGETABLE STRAINER SET



Model FVSFGA

- Quickly and easily strain fresh fruits and vegetables and grind fresh or cooked meat
- Includes Food Grinder and Fruit/Vegetable Strainer



BABY FOOD, APPLE SAUCE, FRUIT BUTTERS AND PRESERVES



TOMATO SAUCE, GAZPACHO, MARINARA AND VEGETABLE DIPS



HUMMUS, PUREED SOUPS, HEALTH DRINKS AND CARROT JUICE



Stand Mixer pictured sold separately.





ATTACHMENT PARTS

## FOOD TRAY



### Model FT

- Use with FGA, SSA and FVSFGA
- Provides a convenient surface for additional food
- Holds large portions for quick processing



PROCESS LARGE BATCHES OF SAUCES, FRUIT BUTTERS, JAMS, JUICE AND SOUPS



PROCESS LARGE AMOUNTS OF BEEF, CHICKEN, TURKEY OR VENISON FOR BURGERS, MEATBALLS AND SAUSAGE



## FRUIT/VEGETABLE STRAINER PARTS



### Model FVSP

- Use with FGA
- Puree and strain fruits and vegetables quickly and easily
- Use only with soft/cooked food



Stand Mixer pictured sold separately.



**KitchenAid**<sup>®</sup>  
FOR THE WAY IT'S MADE.<sup>®</sup>

[WWW.KITCHENAID.COM](http://WWW.KITCHENAID.COM)