
craster

Luxury Products for Hotel and Restaurant Projects

2015 COLLECTION





Craster enables hospitality brands to engage with their customers and create loyalty through the design and manufacture of intelligent, high quality products.

We are passionate about creating beautiful, durable products that emphasise the qualities of the underlying materials from which they are made. In a time where natural materials are increasingly scarce, it is one of our core principles to ensure that our products last the natural life of the materials themselves. We ensure that our timbers are sourced from sustainable forests.

Many of the world's great hotel and restaurant groups are our long term clients, and we work globally with a fantastic group of distributors.

Design sits at the centre of our culture. We are therefore proud to offer a product design service that allows our clients to completely differentiate themselves through the creation of unique products that communicate their brand.

As always, we would love to hear your feedback.

info@craster.com

(UK) +44 (0)845 467 0051
(USA) +1 732 543 7862



FLOW

Flow Rustic	Page 6
Flow Refine	Page 9
Flow Tops	Page 10
Flow Frames	Page 11
Flow Stands and Troughs	Page 12
Flow Trolleys - Presentation	Page 15
Rustic Presentation Boxes and Risers	Page 16
Rustic Display Stands	Page 17

RESTAURANT

Cake Stands	Page 20
Patisserie Risers	Page 21
Three Step Riser	Page 24
Presentation Boards	Page 27
Cicchetti Boards	Page 28
Walnut Canapé Plinths	Page 29
Copper Chip Pots	Page 30
Shaker Collection	Page 32
Bowls	Page 35
Trolleys - Service	Page 36

IN-ROOM DINING

Trays	Page 39
Trolleys - In-Room Dining and Preparation	Page 40

CONFERENCE AND BANQUETING

Flexible Buffet Tables	Page 42
Trolleys for Tables	Page 46

BEDROOM

Tea Service	Page 49
Display Trays	Page 51
Luggage Racks	Page 52
Stainless Steel Accessories	Page 53
Walnut Accessories	Page 54
High-Gloss Accessories	Page 55
Shaker Storage	Page 57
Leather Accessories	Page 58

FOOD COURT

Trays and Trolleys	Page 60
Segregation Bins	Page 61
Marketing Stand	Page 62

DESIGN SERVICES

Design - Development - Delivery	Page 63
---------------------------------	---------



RESTAURANT COLLECTION

FLOW COLLECTION:

Flow is a dynamic system of modular display units, organised around a gastronorm footprint. The system gives you the flexibility to showcase your creativity in a multitude of contexts. Available in 1.1, 1.2, 1.4, 2.4, 3.9 sizes

Flow Rustic Collection - Oak

The basis of the Rustic range is modular gastronorm sized trays, available in two heights, which stack for easy storage. The interconnection between the trays enables a multitude of display options. Add height by elevating these with our stainless steel Flow frames, or use our marble and glass plinths to add material contrast. Rustic Trays are also compatible with our countertop and floor standing stands, the interchangeable trays allow efficient replenishment of display between front and back of house. The Flow Trolley features retractable angled shelves (which fit the Rustic Trays) and an extendable leaf. These combine to enable a sumptuous mobile buffet display.



TRAYS + PLINTHS

- Gastronorm sizing - 1.1, 1.2, 1.4, 2.4, 3.9
- Trays available in oak
- Plinths available in oak/marble/glass
- Modular, stacking system

TRAYS + FRAMES

- Polished stainless steel frames
- Horizontal and Angled options
- Two Heights
- Unique locater system

TROLLEYS + STANDS

- Fit Gastronorm trays - 1.1, 1.2
- Trolley features retractable angled shelves
- Trolley features folding leaf (one end)
- Mobile

Flow Refine Collection - Walnut

The Refine range is a countertop focused collection, comprised of sophisticated walnut trays and plinths in gastronorm sizes, which fit our extensive range of highly polished stainless steel frames. Stackable for easy storage, the natural oiled walnut finish of the Refine trays contrasts beautifully with the luxurious Carerra marble and elegant glass plinths to offer a wide variety of display options for the creative chef.



TRAYS + PLINTHS

- Gastronorm sizing - 1.1, 1.2, 1.4
- Stacking Trays in walnut
- Plinths available in walnut/marble/glass
- Modular, stacking system

TRAYS + FRAMES + PLINTHS

- Polished stainless steel frames
- Horizontal and Angled Options
- Two Heights
- Unique locater system

Modular and stackable gastronorm trays in rustic oak, suitable for use on countertop or with our Flow stands



1. Flow Rustic Tray 1.1

Code: BU_FR001
Material: Oak, Oiled
MOQ: 4
Dimensions: (530 x 325 x 40mm)
 (20.8 x 12.7 x 1.5")

Fits: (BU_FL001/02/03/04)



2. Flow Rustic Tray 1.2

Code: BU_FR002
Material: Oak, Oiled
MOQ: 8
Dimensions: (325 x 265 x 40mm)
 (12.7 x 10.4 x 1.5")

Fits: (BU_FL005/06/07/08)



3. Flow Rustic Tray 1.4

Code: BU_FR003
Material: Oak, Oiled
MOQ: 16
Dimensions: (265 x 162.5 x 40mm)
 (10.4 x 6.3 x 1.5")

Fits: (BU_FL009/10)



4. Flow Rustic Tray 2.4

Code: BU_FR004
Material: Oak, Oiled
MOQ: 8
Dimensions: (530 x 162.5 x 40mm)
 (20.8 x 6.3 x 1.5")

Fits: (BU_FL009/10)



5. Flow Rustic Tray Tall 1.1

Code: BU_FR006
Material: Oak, Oiled
MOQ: 2
Dimensions: (530 x 325 x 75mm)
 (20.8 x 12.7 x 2.9")

Fits: (BU_FL001/02/03/04)



6. Flow Rustic Tray Tall 1.2

Code: BU_FR007
Material: Oak, Oiled
MOQ: 4
Dimensions: (325 x 265 x 75mm)
 (12.7 x 10.4 x 2.9")

Fits: (BU_FL005/06/07/08)



7. Flow Rustic Tray Tall 1.4

Code: BU_FR008
Material: Oak, Oiled
MOQ: 8
Dimensions: (265 x 162.5 x 75mm)
 (10.4 x 6.3 x 2.9")

Fits: (BU_FL009/10)



8. Flow Rustic Tray 3.9

Code: BU_FR005
Material: Oak, Oiled
MOQ: 12
Dimensions: (530 x 108 x 40mm)
 (20.8 x 4.2 x 1.5")

Fits: (BU_FL009/10)



9. Flow Crumb Catcher 1.1

Code: BU_BR001
Material: Oak, Oiled
MOQ: 4
Dimensions: (530 x 325 x 35mm)
 (20.8 x 12.7 x 1.3")



10. Flow Plinth Oak 1.1

Code: BU_FT0035
Material: Oak, Oiled
MOQ: 4
Dimensions: (530 x 325 x 20mm)
 (20.8 x 12.7 x 0.7")

Fits: (BU_FL001/02)



11. Flow Plinth Oak 2.4

Code: BU_FT0037
Material: Oak, Oiled
MOQ: 4
Dimensions: (530 x 162.5 x 20mm)
 (20.8 x 6.3 x 0.7")

Fits: (BU_FL009/10)



12. Flow Plinth Oak 1.2

Code: BU_FT0036
Material: Oak, Oiled
MOQ: 4
Dimensions: (265 x 325 x 20mm)
 (10.4 x 12.8 x 0.7mm)

Fits: (BU_FL005/06)





Sophisticated walnut trays and plinths – use as a countertop solution or add height in conjunction with our Flow stands

FLOW / REFINE



1. Flow Refine Tray 1.1

Code: BU_FF011
Material: Walnut / Matt Lacquer
MOQ: 4
Dimensions: (530 x 325 x 40mm)
 (20.8 x 12.7 x 1.5")

Fits: (BU_FL001/02/03/04)



2. Flow Refine Tray 1.2

Code: BU_FF012
Material: Walnut / Matt Lacquer
MOQ: 6
Dimensions: (265 x 325 x 40mm)
 (10.4 x 12.7 x 1.5")

Fits: (BU_FL005/06/07/08)



3. Flow Refine Tray 1.4

Code: BU_FF013
Material: Walnut / Matt Lacquer
MOQ: 8
Dimensions: (265 x 162.5 x 40mm)
 (10.4 x 6.3 x 1.5")

FLOW / PLINTHS



4. Flow Plinth Walnut 1.1

Code: BU_FT0030
Material: Walnut / Oiled
MOQ: 4
Dimensions: (530 x 325 x 20mm)
 (20.8 x 12.7 x 0.7")

Fits: (BU_FL001/02)



5. Flow Plinth Walnut 2.4

Code: BU_FT0032
Material: Walnut / Oiled
MOQ: 4
Dimensions: (530 x 162.5 x 20mm)
 (20.8 x 6.3 x 0.7")

Fits: (BU_FL009/10)



6. Flow Plinth Walnut 1.2

Code: BU_FT0031
Material: Walnut / Oiled
MOQ: 4
Dimensions: (265 x 325 x 20mm)
 (10.4 x 12.8 x 0.7mm)

Fits: (BU_FL005/06)

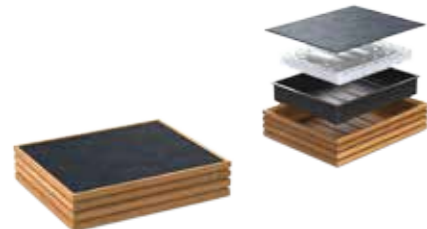
FLOW / PLINTHS **NEW**

Use white Carrera marble and glass to add material interest to displays, suitable for use with our Flow stands



1. Flow Plinth Marble 2.4

Code: BU_FT0020
Material: Marble - White
MOQ: 2
Dimensions: (530 x 162.5 x 20mm) / (20.8 x 6.3 x 0.7")
Fits: (BU_FL009/10)



2. Flow Slate Cooling Tray

Flow Tray Insert 1.2: BU_PT001
Flow Slate Insert 1.2: BU_FT0050
Flow Cool Pack 1.2: BU_CH001
MOQ: 5
Plastic Tray: (297 x 237 x 50mm / 11.7 x 9.3 x 2.0")
Slate Insert: (310 x 250 x 4mm / 12.2 x 9.8 x 0.1")
Cool Pack: (255 x 210 x 30mm / 10.0 x 8.3 x 1.2")

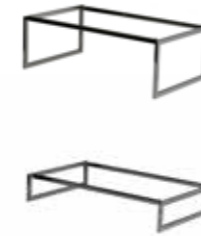
Fits: (BU_FR006 / 07)
 (2 units required for use with 1.1. Tray)

Designed to work with 1.2 and 1.1. tall rustic tray, our cooling system consists of an ABS liner tray, cool pack and slate to offer a solution for keeping food chilled. Ideal for cheese and charcuterie and yoghurt display



FLOW / FRAMES **NEW**

Polished stainless steel frames, offering horizontal or angled display for use with Flow trays or plinths in a variety of materials
 See Trays and Plinths for compatibility



1. Flow Frame Flat High/Low 1.1

High: BU_FL001
Low: BU_FL002
Material: Stainless Steel, Polished
MOQ: 2
High: (530 x 325 x 184.5mm / 20.9 x 12.8 x 7.2")
Low: (530 x 325 x 99.5mm / 20.9 x 12.8 x 3.9")



2. Flow Frame Angled High/Low 1.1

High: BU_FL003
Low: BU_FL004
Material: Stainless Steel, Polished
MOQ: 2
High: (530 x 314 x 182mm / 20.9 x 12.4 x 7.2")
Low: (530 x 315 x 97mm / 20.9 x 12.4 x 3.8")



3. Flow Frame Flat High/Low 1.2

High: BU_FL005
Low: BU_FL006
Material: Stainless Steel, Polished
MOQ: 2
High: (265 x 325 x 184.5mm / 10.4 x 12.8 x 7.2")
Low: (265 x 325 x 99.5mm / 10.4 x 12.8 x 3.9")



4. Flow Frame Angled High/Low 1.2

High: BU_FL007
Low: BU_FL008
Material: Stainless Steel, Polished
MOQ: 2
High: (265 x 314 x 182mm / 10.4 x 12.4 x 7.2")
Low: (265 x 315 x 97mm / 10.4 x 12.4 x 3.8")



5. Flow Frame Flat High/Low 2.4

High: BU_FL009
Low: BU_FL010
Material: Stainless Steel, Polished
MOQ: 2
High: (530 x 163 x 185mm / 20.9 x 6.4 x 7.3")
Low: (530 x 163 x 100mm / 20.9 x 6.4 x 3.9")



3. Flow Plinth Glass 1.1

Code: BU_FT0010
Material: Glass - Clear
MOQ: 2
Dimensions: (530 x 325 x 20mm) / (20.8 x 12.7 x 0.7")
Fits: (BU_FL001/02)



4. Flow Plinth Glass 2.4

Code: BU_FT0011
Material: Glass - Clear
MOQ: 2
Dimensions: (530 x 162.5 x 20mm) / (20.8 x 6.3 x 0.7")
Fits: (BU_FL009/10)



5. Flow Plinth Glass 1.2

Code: BU_FT0012
Material: Glass - Clear
MOQ: 2
Dimensions: (265 x 325 x 20mm) / (10.4 x 12.8 x 0.7mm)
Fits: (BU_FL005/6)



Ideal for larger volume requirements and compatible with Flow trays, allowing multiple configurations and easy replenishment



1. Flow Stand Two Tier 1.2
Code: BU_RS001
Material: Oak, Oiled
MOQ: 1
Dimensions: [309 x 323 x 441mm]
 [12.1 x 12.7 x 17.4"]



2. Flow Stand Two Tier 1.1
Code: BU_RS002
Material: Oak, Oiled
MOQ: 1
Dimensions: [574 x 323 x 441mm]
 [22.6 x 12.7 x 17.4"]



3. Flow Stand Four Tier 1.1
Code: BU_RS003
Material: Oak, Matt Lacquer
MOQ: 4+1
Dimensions: [574 x 400 x 1197mm]
 [22.6 x 15.7 x 47.1"]



4. Flow Stand Five Tier 1.1
Code: BU_RS004
Material: Oak, Matt Lacquer
MOQ: 5+1
Dimensions: [574 x 400 x 1459mm]
 [22.6 x 15.7 x 57.4"]



Flow rustic troughs provide a storage solution for large or higher volume product - ideal for queue control or countertop



1. Flow Trough Tray Half
Code: BU_RS008
Material: Oak, Matt Lacquer
MOQ: 8
Dimensions: [265 x 250 x 160mm]
 [10.4 x 9.8 x 6.3"]



2. Flow Trough Tray
Code: BU_RS007
Material: Oak, Matt Lacquer
MOQ: 4
Dimensions: [530 x 250 x 160mm]
 [20.9 x 9.8 x 6.3"]



3. Flow Trough Tray Tall
Code: BU_RS009
Material: Oak, Matt Lacquer
MOQ: 4
Dimensions: [530 x 250 x 200mm]
 [20.9 x 9.8 x 7.9"]



4. Flow Trough Short
Code: BU_RS006
Material: Oak, Matt Lacquer
MOQ: 1
Dimensions: [574 x 250 x 432mm]
 [22.6 x 9.8 x 17.0"]
Includes: Frame and 1x BU_RS007



5. Flow Trough Tall
Code: BU_RS005
Material: Oak, Matt Lacquer
MOQ: 2+1
Dimensions: [574 x 250 x 857mm]
 [22.6 x 9.8 x 33.7"]
Includes: Frame and 1x BU_RS007
 1x BU_RS009



Featuring pull out shelving system, extending drop leaf and castors, the Flow Trolley is ideal for buffets or display



1. Flow Trolley - Single
Code: TO_RS002
Material: Oak, Matt Lacquer
MOQ: 1
Dimensions: [821 x 700 x 960mm / 32.3 x 27.6 x 37.8"] - Closed
 [1159.5 x 1082 x 960mm / 45.6 x 42.6 x 37.8"] - Open [Shelves and Flap]



2. Flow Trolley - Double
4 Shelves: TO_RS001
2 Shelves: TO_RS009
Material: Oak, Matt Lacquer
MOQ: 1
Dimensions: [1356 x 700 x 960mm / 53.4 x 27.6 x 37.8"] - Closed
 [1703.5 x 1082 x 960mm / 67.1 x 42.6 x 37.8"] - Open [4 Shelves and Flap]
 [1703.5 x 891 x 960mm / 67.1 x 35.1 x 37.8"] - Open [2 Shelves and Flap]

Available with 2 or 4 pull out shelves



Made from solid oak, our range of rustic display units has been designed to showcase and celebrate natural fresh produce



1. Bread Basket - Small

Code: RU_BB001
Material: Oak / Unoilied
MOQ: 6
Dimensions: [170 x 100 x 70mm]
 [6.7 x 3.9 x 2.7"]

2. Bread Basket - Large

Code: RU_BB002
Material: Oak / Unoilied
MOQ: 6
Dimensions: [220 x 100 x 70mm]
 [8.7 x 3.9 x 2.7"]

3. Fish and Chip Tray

Code: TA_RT001
Material: Oak / Matt Lacquer
MOQ: 10
Dimensions: [402 x 302 x 60mm]
 [15.8 x 11.9 x 2.3"]



4. Rustic Oak Riser - Small

Code: RU_334_A
Material: Oak / Unoilied
MOQ: 4
Dimensions: [150 x 150 x 150 mm]
 [5.9 x 5.9 x 5.9"]

5. Rustic Oak Riser - Large

Code: RU_334_B
Material: Oak / Unoilied
MOQ: 4
Dimensions: [200 x 200 x 200 mm]
 [7.9 x 7.9 x 7.9"]

6. Small Deli Style Tray

Code: RU_223_E
Material: Oak / Unoilied
MOQ: 4
Dimensions: [330 x 330 x 50mm]
 [13.0 x 13.0 x 2.0"]

7. Midi Deli Style Tray

Code: RU_223_F
Material: Oak / Unoilied
MOQ: 4
Dimensions: [400 x 300 x 60mm]
 [15.7 x 11.8 x 2.4"]

8. Large Fruit Box

Code: RU_223_G
Material: Oak / Unoilied
MOQ: 2
Dimensions: [500 x 300 x 188mm]
 [19.7 x 11.8 x 7.4"]

Cube risers can also be turned over to accommodate tall objects such as baguettes.



Offering floor and countertop options, our Fruit Stands are made from solid oak, and add rustic style to Point of Sale display



1. Two Tier Fruit Stand (Counter Standing)

Code: RU_476_F
Material: Oak / Oilied
MOQ: 1
Dimensions: [336 x 450 x 600mm]
 [23.6 x 13.2 x 17.3"]

2. Five Tier Fruit Stand (Floor Standing)

Code: RU_476_E
Material: Oak / Oilied
MOQ: 1
Dimensions: [550 x 550 x 1800mm]
 [21.7 x 21.7 x 70.9"]



Our nested Three Tier Stands made from solid oak offer options for display, and store neatly away



1. Three Tier Stand - Mini NEW
 Code: RU_476_G
 Material: Oak / Oiled
 MOQ: 1
 Lower Tier: [224 x 280 x 60mm / 8.8 x 11.0 x 2.4"]
 Middle Tier: [252 x 280 x 140mm / 10.0 x 11.0 x 5.5"]
 Upper Tier: [280 x 280 x 220mm / 11.0 x 11.0 x 8.7"]



2. Three Tier Stand - Narrow NEW
 Code: RU_476_H
 Material: Oak / Oiled
 MOQ: 1
 Lower Tier: [141.5 x 395 x 90mm / 5.6 x 15.6 x 3.5"]
 Middle Tier: [169.5 x 395 x 210mm / 6.7 x 15.6 x 8.3"]
 Upper Tier: [197.5 x 395 x 330mm / 7.8 x 15.6 x 13.0"]



3. Three Tier Fruit Stand
 Code: RU_476_D
 Material: Oak / Oiled
 MOQ: 1
 Lower Tier: [329 x 395 x 90mm / 13.0 x 14.9 x 3.5"]
 Middle Tier: [362 x 395 x 210mm / 13.9 x 16.1 x 7.5"]
 Upper Tier: [395 x 395 x 330mm / 14.9 x 16.1 x 11.2"]





A fresh, elegant take on a classic product, our cake stands are organically shaped, and turned from solid hardwood



1. Cake Stand - Small Drum

Walnut: BU_CS004
Material: Walnut / Matt Lacquer
MOQ: 2
Dimensions: [160 x 160 x 70mm]
[6.2 x 6.2 x 2.7"]

2. Cake Stand - Small

Walnut: BU_CS001
Material: Walnut / Matt Lacquer
MOQ: 2
Dimensions: [157 x 157 x 80mm]
[6.1 x 6.1 x 3.1"]

3. Cake Stand - Medium

Walnut: BU_CS002
Material: Walnut / Matt Lacquer
MOQ: 1
Dimensions: [320 x 320 x 136mm]
[12.5 x 12.5 x 5.3"]

4. Cake Stand - Large

Walnut: BU_CS003
Material: Walnut / Matt Lacquer
MOQ: 1
Dimensions: [320 x 320 x 210mm]
[12.5 x 12.5 x 8.2"]



5. Cake Stand - Small Drum

Code: BU_CS008
Material: Oak / Matt Lacquer
MOQ: 2
Dimensions: [160 x 160 x 70mm]
[6.2 x 6.2 x 2.7"]

6. Cake Stand - Small

Code: BU_CS005
Material: Oak / Matt Lacquer
MOQ: 2
Dimensions: [157 x 157 x 80mm]
[6.1 x 6.1 x 3.1"]

7. Cake Stand - Medium

Code: BU_CS006
Material: Oak / Matt Lacquer
MOQ: 1
Dimensions: [320 x 320 x 136mm]
[12.5 x 12.5 x 5.3"]

8. Cake Stand - Large

Code: BU_CS007
Material: Oak / Matt Lacquer
MOQ: 1
Dimensions: [320 x 320 x 210mm]
[12.5 x 12.5 x 8.2"]

9. Glass Cloche

Code: BU_GC001
Material: Glass
MOQ: 2
Dimensions: [296 x 296 x 145mm]
[11.6 x 11.6 x 5.7"]

Fits Large and Medium Cake Stands



Offering multiple configurations, our architecturally-inspired risers are handmade from solid oak



1. Patisserie Oak Riser - Small

Code: BO_BB05
Material: Oak
MOQ: 2
Dimensions: [210 x 210 x 100mm]
[8.3 x 8.3 x 3.9"]

2. Patisserie Oak Riser - Medium

Code: BO_BB0M
Material: Oak
MOQ: 2
Dimensions: [210 x 210 x 140mm]
[8.3 x 8.3 x 5.5"]

3. Patisserie Oak Riser - Large

Code: BO_BB0L
Material: Oak
MOQ: 2
Dimensions: [210 x 210 x 170mm]
[8.3 x 8.3 x 6.7"]

4. Patisserie Oak Riser - Long

Code: BO_BB0RL
Material: Oak
MOQ: 2
Dimensions: [400 x 210 x 80mm]
[15.7 x 8.3 x 3.1"]



Offering multiple configurations, our architecturally-inspired risers are handmade from solid oak



1. Patisserie Grand Oak - Short

Code: BO_BB002
Material: Oak
MOQ: 2
Dimensions: (325 x 325 x 80mm)
(12.7 x 12.7 x 3.1")

2. Patisserie Grand Oak - Medium

Code: BO_BB004
Material: Oak
MOQ: 2
Dimensions: (325 x 325 x 115mm)
(12.7 x 12.7 x 4.5")

3. Patisserie Grand Oak - Tall

Code: BO_BB006
Material: Oak
MOQ: 2
Dimensions: (325 x 325 x 180mm)
(12.7 x 12.7 x 7.0")



Offering multiple configurations, our architecturally-inspired risers are handmade from solid walnut



1. Patisserie Grand Walnut - Short

Code: BO_BB010
Material: Walnut
MOQ: 2
Dimensions: (325 x 325 x 80mm)
(12.7 x 12.7 x 3.1")

2. Patisserie Grand Walnut - Medium

Code: BO_BB011
Material: Walnut
MOQ: 2
Dimensions: (325 x 325 x 115mm)
(12.7 x 12.7 x 4.5")

3. Patisserie Grand Walnut - Tall

Code: BO_BB012
Material: Walnut
MOQ: 2
Dimensions: (325 x 325 x 180mm)
(12.7 x 12.7 x 7.0")



4. Patisserie Grand Oak Long - Short

Code: BO_BB001
Material: Oak
MOQ: 2
Dimensions: (530 x 325 x 40mm)
(20.8 x 12.7 x 1.5")

5. Patisserie Grand Oak Long - Medium

Code: BO_BB003
Material: Oak
MOQ: 2
Dimensions: (530 x 325 x 80mm)
(20.8 x 12.7 x 3.1")

6. Patisserie Grand Oak Long - Tall

Code: BO_BB005
Material: Oak
MOQ: 2
Dimensions: (530 x 325 x 115mm)
(20.8 x 12.7 x 4.5")



4. Patisserie Grand Walnut Long - Short

Code: BO_BB007
Material: Walnut
MOQ: 2
Dimensions: (530 x 325 x 40mm)
(20.8 x 12.7 x 1.5")

5. Patisserie Grand Walnut Long - Medium

Code: BO_BB008
Material: Walnut
MOQ: 2
Dimensions: (530 x 325 x 80mm)
(20.8 x 12.7 x 3.1")

6. Patisserie Grand Walnut Long - Tall

Code: BO_BB009
Material: Walnut
MOQ: 2
Dimensions: (530 x 325 x 115mm)
(20.8 x 12.7 x 4.5")



Nested set of solid oak risers which offer chefs a versatile platform to showcase their creativity



1. Three Step Riser

Code: BO_BBTS
Material: Oak
MOQ: 2
Dimensions: (400 x 250 x 90mm)
(15.7 x 9.8 x 3.5")

Lower Step

Dimensions: (300 x 250 x 24mm)
(11.8 x 9.8 x 0.9")

Middle Step

Dimensions: (342 x 250 x 53mm)
(13.4 x 9.8 x 2.0")

Upper Step

Dimensions: (400 x 250 x 90mm)
(15.7 x 9.8 x 3.5")

Not Sold Separately





Made from solid timber, our board range offers solutions for dining and presentation, with our signature style, quality and detail



1 . Modern Boards

Large: BO_CMOL
Medium: BO_CMOM
Small: BO_CMOS
Material: Oak / Oiled
MOQ: 10
Large: [350 x 350 x 25mm / 13.7 x 13.7 x 1.0"]
Medium: [300 x 300 x 25mm / 11.8 x 11.8 x 1.0"]
Small: [200 x 200 x 20mm / 7.9 x 7.9 x 0.8"]



2 . Craster Modern Oak Boards - Long

Large: BO_CMROL
Small: BO_CMROS
Material: Oak / Oiled
MOQ: 10
Large: [120 x 400 x 20mm / 4.7 x 15.7 x 0.8"]
Small: [120 x 370 x 20mm / 4.7 x 14.6 x 0.8"]



3. Etched Presentation Board

Code: BO_EB001
Material: Mahogany / Oiled
MOQ: 30
Dimensions: [250 x 250 x 25mm / (9.8 x 9.8 x 0.9")]



4. Craster Paddle Boards

Large: BO_PBOL
Medium: BO_PBOM
Small: BO_PBOS
Material: Oak / Oiled
MOQ: 10
Large: [510 x 200 x 18mm / 13.2 x 8.9 x 0.7"]
Medium: [350 x 190 x 15mm / 13.8 x 7.5 x 0.6"]
Small: [355 x 255 x 18mm / 14.0 x 10.0 x 0.7"]



5. Oak Charcuterie Boards

Large: BO_CMCHBL
Medium: BO_CMCHBM
Material: Oak / Oiled
MOQ: 10
Large: [500 x 200 x 15mm / 19.7 x 7.9 x 0.6"]
Medium: [350 x 190 x 15mm / 13.8 x 7.5 x 0.6"]



6. Canapé Tray

Code: TA_CT001
Material: Oak / Matt Lacquer
MOQ: 10
Dimensions: [500 x 200 x 50mm / 19.6 x 7.8 x 1.9"]
 Oak, Matt Lacquer - with clear acrylic insert for cones and lollypops.



7. Modern Oak Board with Etched Recess

Code: BO_CMORF
Material: Oak / Oiled
MOQ: 10
Dimensions: [340 x 220 x 25mm / 13.3 x 8.6 x 1.0"]
Compatible: Copper Chip Pots - CP_FP003
 Shaker Frites Container - SH_630_D



8. Oak Steak Plates

Large: BO_SPOL
Medium: BO_SPOM
Material: Oak / Oiled
MOQ: 10
Large: [380 x 280 x 30mm / 15.0 x 11.0 x 1.2"]
Medium: [340 x 220 x 30mm / 13.5 x 8.6 x 1.2"]
Compatible: Small Copper Chip Pot - CP_FP001

Contrasting a softly sculpted edge profile with maximum surface area, these boards offer a beautiful presentation solution



1. 12" Pizza Board - Teardrop
 Code: BO_CC001
 Material: Oak / Oiled
 MOQ: 10
 Dimensions: (350 x 350 x 18mm)
 (13.7 x 13.7 x 0.7")



2. 12" Pizza Board with Handle
 Code: BO_CC005
 Material: Oak / Oiled
 MOQ: 10
 Dimensions: (350 x 459 x 18mm)
 (13.7 x 18.0 x 0.7")



3. 12" Pizza Board - Square
 Code: BO_CC002
 Material: Oak / Oiled
 MOQ: 10
 Dimensions: (350 x 350 x 18mm)
 (13.7 x 13.7 x 0.7")



4. Small Rectangle with Handle
 Code: BO_CC006
 Material: Oak / Oiled
 MOQ: 10
 Dimensions: (313 x 170 x 18mm)
 (12.3 x 6.6 x 0.7")



5. Rectangle no Handle
 Large: BO_CC004
 Small: BO_CC003
 Material: Oak / Oiled
 MOQ: 10
 Large: (350 x 350 x 18mm)
 (13.7 x 13.7 x 0.7")
 Small: (350 x 155 x 18mm)
 (13.7 x 6.1 x 0.7")



6. Large Rectangle with Handle
 Code: BO_CC007
 Material: Oak / Oiled
 MOQ: 10
 Dimensions: (530 x 140 x 18mm)
 (20.8 x 5.5 x 0.7")



Solid walnut plinths with organic detail, designed to enhance canapé and formal buffet presentation



1. Walnut Canapé Plinth - Small
 Code: BO_316_B
 Material: Walnut / Oiled
 MOQ: 10
 Dimensions: (310 x 155 x 30mm)
 (12.2 x 6.1 x 1.1")



2. Walnut Canapé Plinth - Medium
 Code: BO_316_C
 Material: Walnut / Oiled
 MOQ: 10
 Dimensions: (300 x 300 x 30mm)
 (11.8 x 11.8 x 1.1")



3. Walnut Canapé Plinth - Large
 Code: BO_316_D
 Material: Walnut / Oiled
 MOQ: 10
 Dimensions: (530 x 320 x 30mm)
 (21.3 x 12.6 x 1.1")



4. Walnut Canapé Plinth - Long
 Code: BO_316_E
 Material: Walnut / Oiled
 MOQ: 10
 Dimensions: (560 x 150 x 30mm)
 (22.0 x 5.9 x 1.1")



Made from solid spun copper, these pots add warmth and material interest to the dining table



1. Copper Chip Pots - Small

Code: CP_FP001
Material: Copper
MOQ: 10
Dimensions: (66 x 66mm)
(2.6 x 2.6")
Volume: 0.15 litres
Fits: Modern Oak Board - BO_CMORF
Oak Steak Plates - BO_SPOL / BO_SPOM

2. Copper Chip Pots - Medium

Code: CP_FP002
Material: Copper
MOQ: 10
Dimensions: (85 x 85mm)
(3.3 x 3.3")
Volume: 0.33 litres

3. Copper Chip Pots - Large

Code: CP_FP003
Material: Copper
MOQ: 10
Dimensions: (100 x 100mm)
(3.9 x 3.9")
Volume: 0.56 litres
Fits: Modern Oak Board - BO_CMORF



Constructed from aero-ply, with delicate copper nail detail, the Shaker range is ideal for dry food presentation



1. Shaker Frites Pot - Small

Code: SH_SR001
Material: Birch Stained Black
MOQ: 10
Dimensions: (66 x 66 x 66mm)
 (2.6 x 2.6 x 2.6")



2. Shaker Frites Pot - Medium

Code: SH_SR002
Material: Birch Stained Black
MOQ: 10
Dimensions: (85 x 85 x 85mm)
 (3.3 x 3.3 x 3.3")



3. Shaker Frites Pot - Large

Code: SH_630_D
Material: Birch Stained Black
MOQ: 10
Dimensions: (100 x 100 x 100mm)
 (3.9 x 3.9 x 3.9")



4. Conical Bread Basket

Code: SH_SR006
Material: Birch Stained Black
MOQ: 10
Dimensions: (190 x 166 x 70mm)
 (7.5 x 6.5 x 2.8")

Fits: Modern Oak Board with Etched Recess (CO_CMORF)



5. Oval Bread Basket

Small: SH_SR009
Large: SH_SR005
Material: Birch Stained Black
MOQ: 10
Small: (140 x 120 x 70mm)
 (5.5 x 4.7 x 2.8")
Large: (190 x 166 x 70mm)
 (7.5 x 6.5 x 2.8")



6. Round Bread Basket with Lid

Code: SH_454_A
Material: Birch Stained Black
MOQ: 10
Dimensions: (170 x 170 x 105mm)
 (6.7 x 6.7 x 4.1")



7. Grissini Tube - Small

Code: SH_SR004
Material: Birch Stained Black
MOQ: 10
Dimensions: (60 x 60 x 140mm)
 (2.3 x 2.3 x 5.5")



8. Baguette Tube - Small

Code: SH_SR007
Material: Birch Stained Black
MOQ: 10
Dimensions: (122 x 122 x 200mm)
 (4.8 x 4.8 x 7.9")



9. Shaker Riser - Small

Black: SH_223_BA
Walnut: SH_223_WA
MOQ: 4
Dimensions: (120 x 120 x 200mm)
 (4.7 x 4.7 x 7.9")



10. Shaker Riser - Medium

Black: SH_223_BB
Walnut: SH_223_WB
MOQ: 2
Dimensions: (220 x 220 x 190mm)
 (8.7 x 8.7 x 7.5")



11. Shaker Riser - Large

Black: SH_223_BC
Walnut: SH_223_WC
MOQ: 2
Dimensions: (280 x 280 x 280mm)
 (11.0 x 11.0 x 11.0")



12. Bread Plinth

Code: BO_DP001
Material: Walnut
MOQ: 10
Dimensions: (280 x 200 x 25mm)
 (11.0 x 7.8 x 0.9")
Fits: SH_SR004 / SH_SR009
 (Must be purchased separately)





Organic solid olive wood bowls, available with a rustic natural edge or a gently rounded profile*



1. Olive Wood Bowl - Small

Code: BW_OBS
Material: Oiled Olive Wood
MOQ: 10
Dimensions: (D115 x H38mm)
 (D4.5" x H1.5")

2. Olive Wood Bowl - Large

Code: BW_307_D
Material: Oiled Olive Wood
MOQ: 3
Dimensions: (D320 x H115mm)
 (D12.6 x H4.5")

3. Olive Wood Bowl (Rustic) - Small

Code: BW_RB0S
Material: Oiled Olive Wood
MOQ: 3
Dimensions: (W230 x H185mm)
 (D9.0 x H7.3")

4. Olive Wood Bowl (Rustic) - Large

Code: BW_RB0
Material: Oiled Olive Wood
MOQ: 3
Dimensions: (W285 x H185mm)
 (D11.2 x H7.3")

*Due to the natural variations in olive wood - bowl sizes may vary significantly. Please speak to a sales person if you require a specific size.



Durable Service Trolleys ideal for the hotel and contract catering environment front of house service



1. Three-Tier Service Trolley

Code:	TO_CTT0B	TO_CTT0	TO_CTTM
Material:	Oak Stained Black	Oak	Mahogany
MOQ:	1	1	1
Dimensions:	[915 x 535 x 959mm] [36.0 x 21.0 x 37.8"]		
Fits:	Craster Modern Trays		
Features:	Rubber Bumpers Locking Castors Brushed Stainless Steel Handle		

2. Trolley with Folding Sides

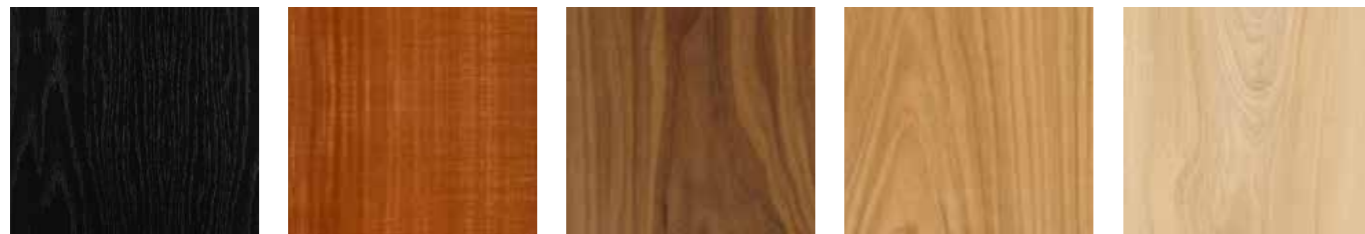
Code:	TO_LDTBLK	TO_LDT
Material:	Oak Stained Black	Oak
MOQ:	1	1
Dimensions:	[1060 x 570 x 970mm] [41.7 x 22.4 x 38.2"] [1931mm / 76.0"]	
Open:	Two extending leaves	
Features:	Rubber Bumpers Locking Castors	



IN-ROOM DINING COLLECTION



Our range of tray styles are available in the hardwood illustrated below. See product information for availability.



BLACK OAK

MAHOGANY

WALNUT

OAK

BEECH

Light yet durable, our range of tray styles, with and without legs, are ideal for in-room dining and breakfast in bed



1. Modern Drinks Tray

Code: TA_CMOM TA_CMBOM TA_CMMM
Material: Oak Black Oak Mahogany
MOQ: 6 6 6
Dimensions: (400 x 400 x 40mm) (15.7 x 15.7 x 1.6")



2. Craster Modern Tray

Code: TA_CMML TA_CMBOL TA_CMOL
Material: Mahogany Black Oak Oak
MOQ: 6 6 6
Dimensions: (600 x 400 x 40mm) (23.6 x 15.7 x 1.6")
Fits: TO_GNL12 / TO_GNL24



3. Modern Stainless Steel Handled Tray

Code: TA_CMSSBO TA_CMSSM
Material: Black Oak Mahogany
MOQ: 6 6
Dimensions: (626 x 400 x 40mm) (24.6 x 15.7 x 1.6")
Fits: TO_GNL12 / TO_GNL24



4. Classic Butler Tray

Large: TA_BUTML TA_BUTWL TA_BUTOL
Medium: TA_BUTMM TA_BUTWM TA_BUTOM
Material: Mahogany Walnut Oak
MOQ: 6 6 6
Large: (610 x 405 x 69mm / 24.0 x 15.9 x 2.7")
Medium: (478 x 313 x 69mm / 18.8 x 12.3 x 2.7")
Fits: Large Tray only TO_GNL12 / TO_GNL24



5. Jersey Butler Tray

Large: TA_JERML
Medium: TA_JERMM
Material: Mahogany
MOQ: 6
Large: (610 x 444 x 57mm / 24.0 x 17.4 x 2.2")
Medium: (544 x 370 x 57mm / 21.4 x 14.6 x 2.2")



6. Self Service Tray

Large: TA_SELML
Medium: TA_SELMM
Material: Mahogany
MOQ: 6
Large: (640 x 445 x 40mm / 25.2 x 17.5 x 1.6")
Medium: (495 x 375 x 40mm / 19.5 x 14.8 x 1.6")



7. Classic Breakfast Tray with Legs

Code: TA_BTO TA_BTW
Material: Oak Walnut
MOQ: 2 2
Dimensions: (600 x 450 x 303mm) (23.6 x 17.7 x 11.9")



8. Modern Breakfast Tray with Legs

Code: TA_ML001
Material: Wenge
MOQ: 2
Dimensions: (626 x 400 x 303mm) (24.6 x 15.7 x 11.9")



9. Butler Tray Stand

Code: SR_BTSBO SR_BTSM SR_BTSB SR_BTSW
Material: Black Mahogany Beech Walnut
MOQ: 3 3 3 3
Dimensions: (565 x 355 x 715mm) (22.2 x 14.0 x 28.1")



Durable Trolley options for In-Room Dining, preparation and re-stocking



CONFERENCE AND BANQUETING COLLECTION



1. In-Room Dining Trolley

Code: TO_IR002
Material: Black
MOQ: 5
Dimensions: [994 x 617 x 763mm / 39.1 x 24.3 x 30.0"]
Open: [1150mm / 45.3"]
Features: Two extending leaves
 Rubber Bumpers
 Locking Castors



2. Restocking Trolley

Code: TO_RT001
Material: HPL
MOQ: 1
Dimensions: [922 x 600 x 1146mm / 36.3 x 23.6 x 45.1"]
Features: Four Soft Close Drawers on Either Side
 Optional drawer inserts for glass or bottles
 Locking covering doors on both sides
 Locking Castors



3. Breakfast Preparation Racks

Single: TO_GNL12
Double: TO_GNL24
Material: Powder Coated Steel
MOQ: 1
Single: [690 x 478 x 1674mm / 27.1 x 18.8 x 65.9"]
Double: [1355 x 476 x 1674mm / 53.3 x 18.7 x 65.9"]
Fits: TA_CMML / TA_CMBOL / TA_CMOL
 TA_CMSSB0 / TA_CMSSM
 TA_BUTML / TA_BUTWL / TA_BUTOL
 Clearance between runners is 120mm / 4.7"
 Fits fully prepared Room Service Trays



Craster's Flexible Buffet Table range is comprised of folding table leg frames, and removable table tops



1. Glass Top (Square) Ebonised Oak Legs



2. Glass Top (Rectangular) Ebonised Oak Legs



3. Wenge stained Oak or HPL Top (Square) Ebonised Oak Legs



4. Wenge stained Oak or HPL Top (Rectangular) Ebonised Oak Legs



1. Glass Top (Square) Stainless Steel Legs

2. Glass Top (Rectangular) Stainless Steel Legs



1. Buffet Table - Glass Top (Half Segmented) Stainless Steel Legs

Code: CB_UT7620
Material: Glass
MOQ: 10
Dimensions: (1107 x 751 x 22mm) Top with 700 Series Legs
(43.6 x 29.6 x 0.9")

2. Buffet Table - Glass Top (Half Round) Stainless Steel Legs

Code: CB_UT7420
Material: Glass
MOQ: 6
Dimensions: (1400 x 700 x 10mm) Top with 700 Series Legs
(55.1 x 27.6 x 0.4")



3. Oak or HPL Top (Square) Stainless Steel Legs

4. Oak or HPL Top (Rectangular) Stainless Steel Legs



3. Buffet Table - Glass Top (Full Round) Stainless Steel Legs

Code: CB_UT7320
Material: Glass
MOQ: 6
Dimensions: (Ø900 x 10mm) Top with 800 Series Legs
(Ø35.4 x 0.4")

4. Stainless Steel Legs also available with Castors

Code: Available on all options please discuss with your sales representative



Durable transport and storage trolley options designed to complement our Universal Tables range



1. Trolley for Square Glass Tops

Code: CB_BTTGT12
Material: Powder Coated Steel
MOQ: 1
Dimensions: (968 x 708 x 1046mm)
 (38.1 x 27.9 x 41.2")
Compatible: 700 or 800 Series tops
Stores: 12 Tops



2. Trolley for Square Wood Tops

Code: CB_BTTWT16
Material: Powder Coated Steel
MOQ: 1
Dimensions: (816 x 916 x 1043mm)
 (32.1 x 36.0 x 41.0")
Compatible: 700 or 800 Series tops
Stores: 16 Tops



3. Table Legs Trolley - Single

Code: CB_BTTLS
Material: Powder Coated Steel
MOQ: 1
Dimensions: (714 x 1002 x 1211mm)
 (28.1 x 39.4 x 47.7")
Compatible: 700 or 800 series legs (steel or oak)
Stores: 8 sets of legs



4. Trolley for Rectangular Glass Tops

Code: CB_BTTGTR6
Material: Powder Coated Steel
MOQ: 1
Dimensions: (703 x 1793 x 1080mm)
 (27.7 x 70.6 x 42.5")
Compatible: 700 or 800 Series tops
Stores: 6 Tops



5. Trolley for Rectangular Wood Tops

Code: CB_BTTWTR12
Material: Powder Coated Steel
MOQ: 1
Dimensions: (816 x 1916 x 1043mm)
 (32.1 x 75.4 x 41.0")
Compatible: 700 or 800 Series tops
Stores: 8 Tops



6. Table Legs Trolley - Double

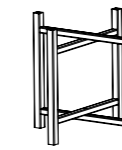
Code: CB_BTTLD
Material: Powder Coated Steel
MOQ: 1
Dimensions: (717 x 1786 x 1211mm)
 (28.1 x 70.3 x 47.7")
Compatible: 700 or 800 series legs (steel or oak)
Stores: 16 sets of legs

A beautifully manufactured and intelligently engineered range of folding buffet tables to support a responsive buffet service. Interchangeable legs and tops in a variety of materials offer a tailored solution for every occasion

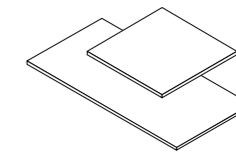
4 STEPS TO CREATING YOUR TABLE COLLECTION



1. CHOOSE A SERIES
 700MM / 27.6" OR 800MM / 31.5" FOOTPRINT



2. CHOOSE YOUR LEGS
 HEIGHT AND MATERIAL



3. CHOOSE YOUR TOPS
 SHAPE AND MATERIAL



4. CHOOSE YOUR TROLLEYS
 →

CODE	DESCRIPTION	DIMENSIONS (L / W / H)		MOQ
------	-------------	------------------------	--	-----

700 SERIES

A modular range of buffet tables built around a 700 x 700mm / 27.6 x 27.6" footprint

LEGS	Code	Description	Dimensions (mm)	Dimensions (in)	MOQ
	CB_UL7101	Short, Oak, Stained Wenge	(519.5 x 519.5 x 690mm)	(20.5 x 20.5 x 27.2")	1
	CB_UL7110	Short, Stainless Steel, Brushed	(507.8 x 507.8 x 690mm)	(19.9 x 19.9 x 27.2")	2
	CB_UL7201	Medium, Oak, Stained Wenge	(519.5 x 519.5 x 890mm)	(20.5 x 20.5 x 35.0")	1
	CB_UL7210	Medium, Stainless Steel, Brushed	(507.8 x 507.8 x 890mm)	(19.9 x 19.9 x 35.0")	2
	CB_UL7301	Tall, Oak, Stained Wenge	(519.5 x 519.5 x 1190mm)	(20.5 x 20.5 x 46.9")	1
	CB_UL7310	Tall, Stainless Steel, Brushed	(507.8 x 507.8 x 1190mm)	(19.9 x 19.9 x 46.9")	2

TOPS - SQUARE	Code	Description	Dimensions (mm)	Dimensions (in)	MOQ
	CB_UT7001	Square, Oak Veneer, Stained Wenge	(700 x 700 x 25mm)	(27.6 x 27.6 x 1.0")	2
	CB_UT7011	Square, HPL, Wenge	(700 x 700 x 25mm)	(27.6 x 27.6 x 1.0")	2
	CB_UT7020	Square, Toughened Glass, Clear	(700 x 700 x 10mm)	(27.6 x 27.6 x 0.4")	2
	CB_UT7030	Square, Toughened Glass, Frosted	(700 x 700 x 10mm)	(27.6 x 27.6 x 0.4")	2

TOPS - RECTANGULAR	Code	Description	Dimensions (mm)	Dimensions (in)	MOQ
	CB_UT7101	Rectangle, Oak Veneer, Stained Wenge	(700 x 1400 x 25mm)	(27.6 x 55.1 x 1.0")	2
	CB_UT7111	Rectangle, HPL, Wenge	(700 x 1400 x 25mm)	(27.6 x 55.1 x 1.0")	2
	CB_UT7120	Rectangle, Toughened Glass, Clear	(700 x 1400 x 10mm)	(27.6 x 55.1 x 0.4")	4
	CB_UT7130	Rectangle, Toughened Glass, Frosted	(700 x 1400 x 10mm)	(27.6 x 55.1 x 0.4")	4

TOPS - ROUND	Code	Description	Dimensions (mm)	Dimensions (in)	MOQ
	CB_UT7320	Round, Toughened Glass, Clear	(990 x 990 x 10mm)	(39 x 39 x 0.4")	6
	CB_UT7330	Round, Toughened Glass, Frosted	(990 x 990 x 10mm)	(39 x 39 x 0.4")	6

800 SERIES

A modular range of buffet tables built around a 800 x 800mm / 31.5 x 31.5" footprint

LEGS	Code	Description	Dimensions (mm)	Dimensions (in)	MOQ
	CB_UL8101	Short, Oak, Stained Wenge	(584.5 x 584.5 x 690mm)	(23.0 x 23.0 x 27.1")	2
	CB_UL8110	Short, Stainless Steel, Brushed	(572.8 x 572.8 x 690mm)	(22.6 x 22.6 x 27.1")	10
	CB_UL8201	Medium, Oak, Stained Wenge	(584.5 x 584.5 x 890mm)	(23.0 x 23.0 x 35.0")	2
	CB_UL8210	Medium, Stainless Steel, Brushed	(572.8 x 572.8 x 890mm)	(22.6 x 22.6 x 35.0")	10
	CB_UL8301	Tall, Oak, Stained Wenge	(584.5 x 584.5 x 1190mm)	(23.0 x 23.0 x 46.8")	2
	CB_UL8310	Tall, Stainless Steel, Brushed	(572.8 x 572.8 x 1190mm)	(22.6 x 22.6 x 46.9")	10

TOPS - SQUARE	Code	Description	Dimensions (mm)	Dimensions (in)	MOQ
	CB_UT8001	Square, Oak Veneer, Stained Wenge	(800 x 800 x 25mm)	(31.5 x 31.5 x 1.0")	2
	CB_UT8011	Square, HPL, Wenge	(800 x 800 x 25mm)	(31.5 x 31.5 x 1.0")	2
	CB_UT8020	Square, Toughened Glass, Clear	(800 x 800 x 10mm)	(31.5 x 31.5 x 0.4")	10
	CB_UT8030	Square, Toughened Glass, Frosted	(800 x 800 x 10mm)	(31.5 x 31.5 x 0.4")	10

TOPS - RECTANGULAR	Code	Description	Dimensions (mm)	Dimensions (in)	MOQ
	CB_UT8101	Rectangle, Oak Veneer, Stained Wenge	(800 x 1600 x 25mm)	(31.5 x 63.0 x 1.0")	2
	CB_UT8111	Rectangle, HPL, Wenge	(800 x 1600 x 25mm)	(31.5 x 63.0 x 1.0")	2
	CB_UT8120	Rectangle, Toughened Glass, Clear	(800 x 1600 x 10mm)	(31.5 x 63.0 x 0.4")	10
	CB_UT8130	Rectangle, Toughened Glass, Frosted	(800 x 1600 x 10mm)	(31.5 x 63.0 x 0.4")	10

TOPS - ROUND	Code	Description	Dimensions (mm)	Dimensions (in)	MOQ
	CB_UT8320	Round, Toughened Glass, Clear	(1130 x 1130 x 10mm)	(44.5x 44.5 x 0.4")	10
	CB_UT8330	Round, Toughened Glass, Frosted	(1130 x 1130 x 10mm)	(44.5x 44.5 x 0.4")	10



BEDROOM COLLECTION



The Luxury Tea-Set is comprised of three pieces in solid walnut, with a tea caddy that has optional removable slots



1. Luxury Tea Set (3 Piece)

Code: TA_LTSFW
 Material: Walnut
 MOQ: 20
 Large Tray: (427 x 292 x 25mm / 16.8 x 11.5 x 1.0")
 Small Tray: (162 x 280 x 25mm / 6.4 x 11.0 x 1.0")
 Tea Caddy: (280 x 77 x 87mm / 11.0 x 3.0 x 3.4")

2. Small Tray

TA_LTSFW.2
 (162 x 280 x 25mm)
 (6.4 x 11.0 x 1.0")

3. Tea Caddy

TA_LTSFW.3
 (280 x 77 x 87mm)
 (11.0 x 3.0 x 3.4")

4. Large Tray

TA_LTSFW.1
 (427 x 292 x 25mm)
 (16.8 x 11.5 x 1.0")



Simple, elegant hospitality tea and coffee presentation pieces in black



1. Classic Tea Set

Code: TA_CTSB
Material: Black Lacquer
MOQ: 10
Dimensions: (450 x 315 x 28mm)
 (17.7 x 12.4 x 1.1")

Kettle available to purchase separately (TA_KET01)



2. Tea Box with Lid

Code: BA_TBBBL
Material: Black Lacquer
MOQ: 2
Dimensions: (200 x 200 x 90mm)
 (7.9 x 7.9 x 3.5")



3. Deluxe Tea Service Set

Code: TA_444_B
Material: Black Lacquer
MOQ: 6
Dimensions: (516 x 616 x 115mm)
 (20.3 x 24.2 x 4.5")

Tea service set comprising two trays and a tea box with hinged lid. These items sold separately.



Small Tray

Code: TA_444_B.3
Dimensions: (246 x 85 x 16mm)
 (9.6 x 3.3 x 0.6")



Tea Box

Code: TA_444_B.2
Dimensions: (246 x 191 x 105mm)
 (9.6 x 7.5 x 4.1")



Large Tray

Code: TA_444_B.1
Dimensions: (516 x 616 x 40mm)
 (20.3 x 24.2 x 1.5")



These modern shaped trays are perfect for the contemporary hotel room environment, leather liner as additional option



1. Laundry Display Tray and Leather Liner

Code: TA_DT002
Material: Black
MOQ: 6
Dimensions: (400 x 400 x 40mm)
 (15.7 x 15.7 x 1.5")

Available with and without leather liner



2. Kettle Tray with Dropped Front and Leather Liner

Code: TA_KT001
Material: Oak Stained Wenge
MOQ: 30
Dimensions: (500 x 400 x 40mm)
 (19.8 x 15.7 x 1.5")

Available with and without leather liner.

Liner: TA_KT002
Material: Leather - Black
MOQ: 30
Dimensions: (476 x 376 x 7.5mm)
 (18.7 x 14.8 x 0.3")



A timeless design, our Luggage Racks are available in solid timber or stainless steel. Bespoke options available on request



1. Stainless Steel Luggage Rack with Backboard

Code: SR_LUGBSSP
Material: Polished
MOQ: 20
Dimensions: (510 x 474 x 587mm)
 (20.1 x 18.7 x 23.1")



2. Stainless Steel Luggage Rack

Code: SR_LUGSSP
Material: Polished
MOQ: 20
Dimensions: (520 x 430 x 460mm)
 (20.5 x 16.9 x 18.1")



3. Luggage Rack with Backboard

Code: SR_LUGBM	SR_LUGBBLK	SR_LUGBO	SR_LUGBW
Material: Mahogany	Black	Oak	Walnut
MOQ: 10	10	10	10
Dimensions: (655 x 417 x 530mm) (25.8 x 16.4 x 20.9")			

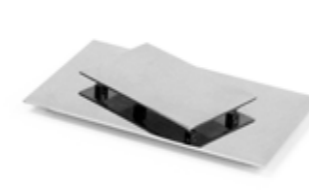


4. Luggage Rack

Code: SR_LUGBLK	SR_LUGM	SR_LUGO	SR_LUGW
Material: Black	Mahogany	Oak	Walnut
MOQ: 10	10	10	10
Dimensions: (655 x 417 x 466mm) (25.8 x 16.4 x 18.3")			



High quality polished stainless steel presentation, with non-scratch feet



1. Amenities Plinth

Small: AP_136_D
Medium: AP_SS001
Material: Stainless Steel
MOQ: 10
Small: (150 x 95 x 11mm)
 (5.9 x 3.7 x 0.4")
Medium: (250 x 150 x 11mm)
 (9.8 x 5.9 x 0.4")



2. Stainless Steel Note Pad Holder

Code: AP_317_I
Material: Stainless Steel
MOQ: 10
Dimensions: (81 x 81 x 20 mm)
 (3.2 x 3.2 x 0.8")



3. Stainless Steel Soap Dish

Code: AP_317_K
Material: Stainless Steel
MOQ: 10
Dimensions: (100 x 60 x 20mm)
 (3.9 x 2.4 x 0.8")



4. Amenities Tray

Code: AP_317_B
Material: Stainless Steel
MOQ: 10
Dimensions: (425 x 200 x 35mm)
 (16.7 x 7.9 x 1.4")



5. Vanity Accessories Container

Code: AP_SS003
Material: Stainless Steel
MOQ: 10
Dimensions: (89 x 89 x 110mm)
 (3.5 x 3.5 x 4.3")



6. Stainless Steel Tissue Box with Removable Base

Code: AP_317_J
Material: Stainless Steel
MOQ: 10
Dimensions: (122 x 122 x 138mm)
 (4.8 x 4.8 x 5.4")



7. Stainless Steel Waste Bin with lid

Code: AP_SS002
Material: Stainless Steel
MOQ: 10
With Lid: (175 x 175 x 240mm)
 (6.9 x 6.9 x 9.4")



8. Stainless Steel Waste Bin without lid

Code: AP_317_WB
Material: Stainless Steel
MOQ: 10
Without Lid: (175 x 175 x 220mm)
 (6.9 x 6.9 x 8.7")



Constructed from walnut, with durable lacquer suitable for use in a bathroom environment



1. Walnut Amenity Tray - Straight

Code: AP_471_D
Material: Walnut
MOQ: 50
Dimensions: (420 x 100 x 27mm)
 (17.7 x 3.2 x 1.1")



2. Bath Tub Caddy

Code: AP_TA001
Material: Walnut
MOQ: 50
Dimensions: (940 x 170 x 30mm)
 (37 x 6.7 x 1.2")



3. Walnut Accessories

Cotton Holder: AP_364_Q
Lotion Dispenser: AP_364_P
Material: Walnut
MOQ: 50
Cotton Holder: (70 x 70 x 130mm / 2.8 x 2.8 x 5.1")
Lotion Dispenser: (70 x 70 x 180mm / 2.8 x 2.8 x 7.1")



4. Walnut Tissue Box

Code: AP_364_W
Material: Walnut
MOQ: 10
Dimensions: (132 x 132 x 137mm)
 (5.2 x 5.2 x 5.4")



5. Small Tray

Code: TA_LTSFW.2
Material: Walnut
MOQ: 10
Dimensions: (162 x 280 x 25mm)
 (6.4 x 11.0 x 1.0")



A sumptuous material for an exclusive amenities presentation



1. Bathroom Amenity Box

Code: AP_AB002
Material: High-Gloss Black
MOQ: 100
Dimensions: (214 x 244 x 154mm)
 (8.4 x 9.6 x 6.0")



2. Bathroom Amenity Box

Code: AP_AB001
Material: High-Gloss Black
MOQ: 100
Dimensions: (306 x 136 x 102mm)
 (12.0 x 5.3 x 4.0")



BEDROOM / SHAKER STORAGE

Constructed from aero-ply with delicate copper nail detail, the Shaker Range adds a touch of luxury to the bedroom or bathroom



1. Loo Roll Holder

Code: SH_SP001
Material: Birch Stained Walnut
 Birch Stained Black
MOQ: 10
Dimensions: (130 x 130 x 130mm)
 (5.1 x 5.1 x 5.1")



2. Shaker Storage Boxes

Box:	Black:	Walnut:	MOQ:	Dimensions:
No.1	SH_OCShB1	SH_OCShW1	10	(119 x 73 x 45mm / 4.7 x 2.9 x 1.8")
No.3	SH_OCShB3	SH_OCShW3	10	(176 x 116 x 75mm / 6.9 x 4.6 x 2.9")
No.5	SH_OCShB5	SH_OCShW5	10	(251 x 178 x 102mm / 9.9 x 7.0 x 4.0")
No.7	SH_OCShB7	SH_OCShW7	10	(342 x 241 x 129mm / 13.5 x 9.5 x 5.1")



3. Luxury Waste Paper Bin - Small

Code:	SH_LW001	SH_LW002
Material:	Birch Stained Walnut	Birch Stained Black
MOQ:	10	10
Dimensions:	(240 x 161 x 305mm) (9.4 x 6.3 x 12.0")	



4. Luxury Waste Paper Bin - Large

Code:	SH_LWBW	SH_LW003
Material:	Birch Stained Walnut	Birch Stained Black
MOQ:	10	10
Dimensions:	(325 x 247 x 305mm) (12.7 x 9.7 x 12.0")	



5. Laundry Bin - Conical

Code:	SH_LBCW	SH_LB001
Material:	Birch Stained Walnut	Birch Stained Black
MOQ:	10	
Dimensions:	(415 x 415 x 625 mm) (16.3 x 16.3 x 24.6")	



Hand crafted faux leather accessories designed especially to complement the bedroom



1. Vide-Poche
Code: AP_367_VP
Material: Espresso Brown Faux Leather / Suede Inner
MOQ: 10
Dimensions: (159 x 129 x 4mm)
 (6.3 x 5.1 x 0.2")



2. Condiment Box
Code: AP_LB004
Material: Espresso Brown Faux Leather / Suede Inner
MOQ: 100
Dimensions: (200 x 265 x 55mm)
 (7.8 x 10.4 x 2.2")

Customisable inserts available



3. Leather Tissue Box - Square
Code: AP_367_H
Material: Espresso Brown Faux Leather / Suede Inner
MOQ: 10
Dimensions: (138 x 138 x 140mm)
 (5.4 x 5.4 x 5.5")



4. Leather Laundry Box
Small: AP_LB005
Large: AP_LB006
Material: Espresso Brown Faux Leather / Suede Inner
MOQ: 10
Small: (380 x 300 x 130mm / 14.9 x 11.8 x 5.1")
Large: (430 x 380 x 130mm / 16.9 x 14.9 x 5.1")

Available on request with 'laundry' debossed on lid



5. Leather Shoe Box
Code: AP_LB003
Material: Espresso Brown Faux Leather
MOQ: 20
Dimensions: (372 x 236 x 143mm)
 (14.6 x 9.2 x 5.6")



6. Leather Waste Bin - Square
Code: AP_367_G
Material: Espresso Brown Faux Leather with Stainless Steel Rim and Removable Fire Resistant Metal Liner
MOQ: 10
Dimensions: (209 x 209 x 257mm)
 (8.2 x 8.2 x 10.1")



FOOD COURT COLLECTION



Ideal for high-volume environments, the Wave Tray offers a unique profile and features an anti-slip surface



1. The Wave Tray

Code: TA_SGW
Material: ABS
MOQ: 10
Dimensions: [External 460 x 325 x 25mm / Internal 410 x 308mm]
 [External 18.1 x 12.8 x 1.0" / Internal 16.1 x 12.1"]
Features: Anti-slip functionality
 Can easily be cleaned through commercial dishwashers

2. Front of House - Tray Storage Trolley

Code: TO_270_A
Material: Oak
MOQ: 5
Dimensions: [550 x 350 x 790mm]
 [21.7 x 13.8 x 31.5"]
Stores: 40 Wave Trays



3. Redistribution Trolley - Single Stack

Code: NQ439_D
Material: Stainless Steel
MOQ: 5
Dimensions: [510 x 433 x 950mm]
 [20.0 x 17.0 x 37.4"]

4. Redistribution Trolley - Triple Stack

Code: NQ439_C
Material: Stainless Steel
MOQ: 5
Dimensions: [1105 x 542 x 933mm]
 [43.5 21.3 x 36.7"]

5. Clearance Trolley

Code: NQ439_B
Material: Stainless Steel
MOQ: 5
Dimensions: [1003 x 508 x 973mm]
 [39.4 x 20 x 38.3"]



Contemporary styled segregation bin, available as shown or with customisable apertures to optimise recycling requirements



1. Double Segregation Bin

Code: FC_SB002
Material: Stainless Steel
MOQ: 5
Dimensions: [668 x 378 x 890mm]
 [26.3 x 14.8 x 35.0"]

2. Triple Segregation Bin

Code: FC_SB001
Material: Stainless Steel
MOQ: 5
Dimensions: [1054 x 373 x 862mm]
 [41.9 x 14.6 x 33.9"]

The bin is also available as single and double aperture versions.



Durable and functional marketing stand, with built-in castors and is designed to allow staff to easily update marketing materials

1. Marketing Stand

Code: NQ1030_A
Material: Stainless Steel
MOQ: 5
Dimensions: (870 x 490 x 1347mm)
 (34.2 x 19.2 x 53.0")

Craster offer an integrated design and manufacture service for premium hotel, retail and restaurant groups. We empower our clients to communicate the values of their brand through the fabric of design.

Design

We bring a unique blend of values to our design process, combining curiosity, integrity, sustainability and exceptional quality. Our in-house development team draws on its extensive industrial design experience, category knowledge and market awareness to create truly unique and compelling products that live and breathe our clients' brand values.

Development

Working closely with our manufacturing partners in Europe and the Far East, our in-house design and development team manage the product development process, to bring your concepts to reality.

Delivery

Our in-house supply chain oversees and controls the whole manufacturing and delivery process. And with warehouses in the UK and USA and global distribution partners, we manage a robust end to end fulfilment service for many of our global clients.

Get in Touch

If you have a custom development project that you would like to discuss with us – please make contact via info@craster.com or do give us a call:
 (UK) +44 (0)845 467 0051
 (USA) +1 732 543 7862



