



CONCEPTION  
FRANÇAISE

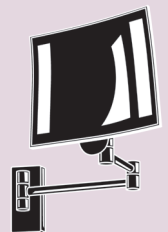
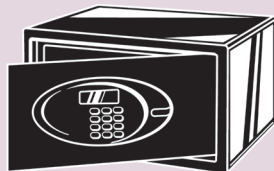
LE CONFORT À PORTÉE DE MAIN



RÉSUMÉ CATALOGUE 2016

ÉQUIPEMENT  
**HÔTELLERIE & COLLECTIVITÉS**

[www.jvd.com.sg](http://www.jvd.com.sg)



visit us at [www.jvd.com.sg](http://www.jvd.com.sg) for full specifications



## Alteo Plus 1875

### General Specifications

- LighTouch® power (JVD patented design & technology)
- Power 220V-240V 50/60Hz 1875W
- Ionic function and 6 drying settings:  
2 airflow settings of 70 and 100 m3/h  
3 temperature (including 1 cold shot)
- Spiral cord length 40 cm extendable with plug
- Integrated over-heating and circuit protection
- Removable front nozzle and back filter for easy cleaning



8 22 1044



8 22 1045



8 22 1140



8 22 1139



8 22 1043



8 66 1269

### LighTouch®



JVD proprietary system to maximise guest comfort, energy efficiency and safety. Auto-cut off when not in use. Holding the handle will turn on the hairdryer (patented design & technology)

Reference	Designation	Color
822 1043 WH	Alteo Plus 1875W, 6 settings, Ionic, Hand-held	White
822 1044 BK	Alteo Plus 1875W, 6 settings, Ionic, Hand-held	Black
822 1045 SIL	Alteo Plus 1875W, 6 settings, Ionic, Hand-held	Silver
822 1139 CHR	Alteo Plus 1875W, 6 settings, Ionic, Hand-held	Chrome
822 1140 RM	Alteo Plus 1875W, 6 settings, Ionic, Soft-matt	Matt Black
866 1269	Alteo Plus/Ibiza wall-mounted holder, zinc alloy	Chrome

## Ibiza 1875 / Ibiza Plus 2200

### General Specifications

- Power 220V~240V 50/60Hz 1875W & 2200W
- Long-life AC motor; slider power switch
- Ionic function and 6 drying settings
- Integrated over-heating and circuit protection
- Removable front nozzle and back filter for easy cleaning



8 22 1141



8 22 919



8 22 918

Reference	Designation	Color
822 918 WH	Ibiza 1875W, straight cord 250cm with plug	White
822 919 BK	Ibiza 1875W, straight cord 250cm with plug	Black
822 1141 RM	Ibiza Plus 2200W, curly cord 50cm, soft rubber	Matt Black
866 1269	Alteo Plus/Ibiza wall-mounted holder, zinc alloy	Chrome

## Coral foldable 1600

### General Specifications

- Foldable, Hand-held
- Power: 220V-240V 50/60Hz 1600W
- 3 drying settings including cold shot
- Airflow 60 and 90m3/h
- Slider power switch
- 40 cm extendable spiral cord with plug
- Over-heating/circuit protection
- Removable back filter



8 22 827



8 22 818

Reference	Designation	Color
822 818 WH	Coral Foldable, 1600W, 3 settings, Hand-held	White
822 827 BK	Coral Foldable, 1600W, 3 settings, Hand-held	Black

# Brittany 1600

## General Specifications

- \*LighTouch® power (JVD patented design & technology)
- Power 220V-240V 50/60Hz 1600W
- Ionic function and 6 drying settings:  
2 airflow settings of 60 and 90 m<sup>3</sup>/h  
3 temperature (including 1 cold shot)
- Spiral cord length 40 cm extendable with plug
- Integrated over-heating and circuit protection
- Removable front nozzle and back filter for easy cleaning



Reference	Designation	Color
822 1046 WH	Brittany 1600W, 6 settings, Ionic, Hand-held	White
822 1047 BK	Brittany 1600W, 6 settings, Ionic, Hand-held	Black
822 1049 WH	Brittany 1600W, 6 settings Ionic, Wall-mounted	White
822 1050 BK	Brittany 1600W, 6 settings Ionic, Wall-mounted	Black
866 1220	Brittany wall-mounted holder, zinc alloy	Chrome

# Clipper 1600

## General Specifications

- Hold button safety switch
- Power 220V-240V 50/60Hz 1600W
- 3 drying settings including cold shot
- Airflow 60 and 90m<sup>3</sup>/h
- Integrated over-heating and circuit protection
- Removable front nozzle



Safety Microswitch Hold Button System

Reference	Designation	Color
822 191 WH	Clipper SC, 1600W, 3 settings, Hand-held	White
822 192 BK	Clipper SC, 1600W, 3 settings, Hand-held	Black
822 193 IV	Clipper SC, 1600W, 3 settings, Hand-held	Ivory
822 178 WH	Clipper SC, 1600W, 3 settings, Wall-mounted holder	White
822 179 BK	Clipper SC, 1600W, 3 settings, Wall-mounted holder	Black
822 180 IV	Clipper SC, 1600W, 3 settings, Wall-mounted holder	Ivory

Reference	Designation	Color
822 802 WH	Clipper Evo PR, 1600W, dual shaver 115/230V	White
822 806 BK	Clipper Evo PR, 1600W, dual shaver 115/230V	Black
822 896 IV	Clipper Evo PR, 1600W, dual shaver 115/230V	Ivory



Available in shaver unit dual voltage 115V/230V

# Oceanis 1600

## General Specifications

- Power 220V~240V 50/60Hz 1600W
- 3 drying settings including cold shot
- Airflow 60 and 90m<sup>3</sup>/h
- 40 cm extendable spiral cord
- Over-heating/circuit protection
- Hold Button safety system
- Impact resistant
- Holder with On/off switch



Safety Microswitch Hold Button System



Available in shaver unit dual voltage 115V/230V

Reference	Designation	Color
822 413 WH	Oceanis DC, Double Chrome, 1600W, Wall-mounted holder	White
822 414 BK	Oceanis DC, Double Chrome, 1600W, Wall-mounted holder	Black
822 403 WH	Oceanis PR Single Chrome, 1600W, dual shaver 115/230V	White
822 407 Bk	Oceanis PR Single Chrome, 1600W, dual shaver 115/230V	Black



## Eden Plus 1200

### General Specifications

- LighTouch® power (JVD patented design & technology)
- Power 220V-240V 50/60Hz 1200W
- 3 drying settings including cold shot
- Airflow 35 and 60 m<sup>3</sup>/h
- Spiral cord length 40 cm extendable
- Integrated over-heating and circuit protection
- Removable back filter



8 22 1069



8 22 1070



8 22 1071

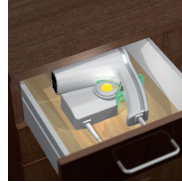


866 1270

Reference	Designation	Color
822 1068 WH	Eden Plus 1200W, 3 settings, Hand-held	White
822 1069 BK	Eden Plus 1200W, 3 settings, Hand-held	Black
822 1070 WH	Eden Plus 1200W, 3 settings, Wall-mounted	White
822 1071 BK	Eden Plus 1200W, 3 settings, Wall-mounted	Black
866 1270	Eden Hair Dryer Holder, zinc alloy	Chrome



8 22 1072



- With drawer-mounted holder; light and power switch

Reference	Designation	Color
822 1072 WH	Eden Plus 1200W, 3 settings, Drawer-mount	White

## Piccolo Evo 1200

### General Specifications

- Hold button safety switch
- Power 220V-240V 50/60Hz 1200W
- 3 drying settings including cold shot
- Airflow 45 and 70m<sup>3</sup>/h
- Spiral cord length 40 cm extendable with plug
- Integrated over-heating and circuit protection
- Removable back filter



8 22 816



Safety Microswitch Hold Button System



8 22 815



8 22 824

Reference	Designation	Color
822 816 WH	Piccolo Evo, 1200W, 3 settings, Hand-held	White
822 825 BK	Piccolo Evo, 1200W, 3 settings, Hand-held	Black
822 815 WH	Piccolo Evo, 1200W, 3 settings, Wall-mounted	White
822 824 BK	Piccolo Evo, 1200W, 3 settings, Wall-mounted	Black

## Hair dryer pouches



2 402 902



2 402 901



2 402 835



2 402 836

Reference	Designation	Color
240 2901 BK	Hair Dryer Pouch, non-woven, with print	Black
240 2902 WH	Hair Dryer Pouch, non-woven, with print	White
240 2903 BK	Alteo/Ibiza Pouch, non-woven, with print	Black
240 2904 WH	Alteo/Ibiza Pouch, non-woven, with print	White
240 2835 BEI	Hair Dryer Pouch, velvet with embroidery	Beige
240 2836 BK	Hair Dryer Pouch, velvet with embroidery	Black
240 2841 BK	Alteo/Ibiza Pouch, velvet with Embroidery	Black

## Duchesse 0.8 & 1.0

### General Specifications

- Power 220V~240V, 1250W
- Capacity 0.8 & 1.0 litre
- SwitchSafe® power system (JVD patent)
- Concealed heating element
- 360° stainless steel water reservoir
- Removable water filter
- Auto turn off when boiled or empty
- Power pilot light
- Available in white, black and ivory colors



**SwitchSafe**  
SYSTEM®

A JVD patented system that features special switch design to prevent short-circuit and unintended reboiling. This will optimize kettle lifespan.



Reference	Designation	Color
866 1010 WH	Duchesse Switchsafe Kettle, 0.8 litre, 1250W	White
866 1011 BK	Duchesse Switchsafe Kettle, 0.8 litre, 1250W	Black
866 1012 IV	Duchesse Switchsafe Kettle, 0.8 litre, 1250W	Ivory
866 1013 WH	Duchesse Switchsafe Kettle, 1.0 litre, 1250W	White
866 1014 BK	Duchesse Switchsafe Kettle, 1.0 litre, 1250W	Black
866 1015 IV	Duchesse Switchsafe Kettle, 1.0 litre, 1250W	Ivory

## Duchesse SS 0.8 & 1.0

### General Specifications

- Power 220V~240V, 1250W
- Capacity 0.8 & 1.0 litre
- SwitchSafe® power system (JVD patent)
- Concealed heating element
- 360° stainless steel water reservoir
- Auto turn off when boiled or empty
- Power pilot light
- Available in matt and polish stainless steel



Reference	Designation	Color
866 914 MT	Duchesse SS 0.8 litre, 1250W, Stainless Steel	Matt
866 915 PH	Duchesse SS 0.8 litre, 1250W, Stainless Steel	Polish
866 916 MT	Duchesse SS 1.0 litre, 1250W, Stainless Steel	Matt
866 917 PH	Duchesse SS 1.0 litre, 1250W, Stainless Steel	Polish

## Presto SS 1.0

### General Specifications

- Power 220V~240V, 2520W~3000W
- Capacity 1.0 litre
- Fast boiling time, maximum 3 minutes
- Concealed heating element
- 360° stainless steel water reservoir
- Auto turn off when boiled or empty
- Removable water filter
- Power pilot light
- Available in matt stainless steel



Reference	Designation	Color
866 2022	Presto SS 1.0 litre, 2520W-3000W, Stainless Steel	Matt



## Zenith 0.8 & 1.0

### General Specifications

- Power 220V~240V, 1250W
- Capacity 0.8 & 1.0 litre
- Concealed heating element
- 360° stainless steel water reservoir
- Auto turn off when boiled or empty
- Power pilot light
- Available in white, black and ivory colors



Reference	Designation	Color
866 375 WH	Zenith Kettle, 0.8 litre, 1250W	White
866 376 IV	Zenith Kettle, 0.8 litre, 1250W	Ivory
866 377 BK	Zenith Kettle, 0.8 litre, 1250W	Black
866 411 WH	Zenith Kettle, 1.0 litre, 1250W	White
866 412 IV	Zenith Kettle, 1.0 litre, 1250W	Ivory
866 413 BK	Zenith Kettle, 1.0 litre, 1250W	Black

## Mèridien & Sommet 1700

### General Specifications

- Power 220V~240V, 1850W
- Capacity 1.7 litre
- Concealed heating element
- 360° stainless steel water reservoir
- Auto turn off when boiled or empty
- Removable water filter
- Power pilot light



Reference	Designation	Color
866 1016 BK	Mèridien Kettle, 1.7 litre, 1850W	Black
866 1017 MT	Sommet 1.7 litre, 1850W, Stainless Steel	Matt

## Descaling powder

### General Specifications

- Non-toxic, natural citrique acide
- Odourless
- 100% biodegradable
- Simple usage to remove stubborn stains
- 400 gm per tub, spoon provided inside



Reference	Designation	Colour
888 357	Descaling powder	White

# Voyager

## General Specifications

- High quality melamine trays
- Heat and stain resistant
- Passed food safety standards (LFGB)/EN1186
- Available in black, white and ivory
- Main : H25/W330/L400mm
- Service : H17/W145/L320mm
- Sachet : H50/W100/L100mm

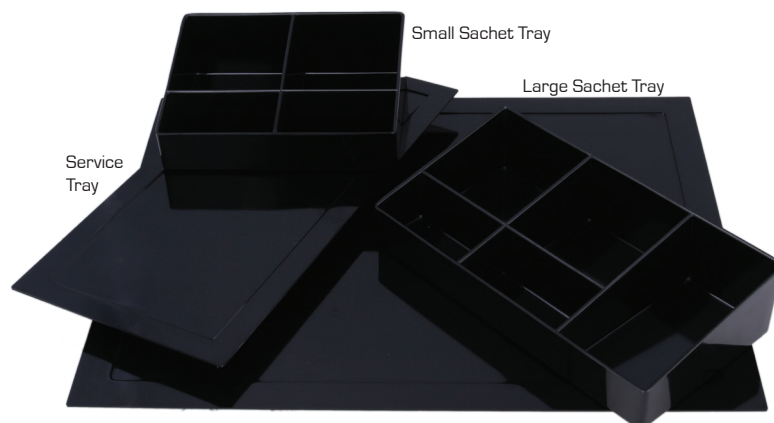


Model	Designation	Color
866 163	Voyager Main Tray	White
866 164	Voyager Service Tray	White
866 165	Voyager Sachet Tray	White
866 064	Voyager Main Tray	Ivory
866 065	Voyager Service Tray	Ivory
866 066	Voyager Sachet Tray	Ivory
866 074	Voyager Main Tray	Black
866 075	Voyager Service Tray	Black
866 076	Voyager Sachet Tray	Black

# Zen Line

## General Specifications

- High quality melamine trays
- Heat and stain resistant
- Passed food safety standards (LFGB)/EN1186
- Available in black, white and ivory
- Main : H22/W295/L375mm
- Service : H10/W150/L295mm
- Sachet : H50/W112/L212mm
- Small Sachet : H50/W120/L152mm



## Zen Line Tray Fixation

A special Zen Line main tray for kettle fixation.  
Fittable to all Duchesse and Zenith kettles.



Model	Designation	Color
866 885	Zen Line Main Tray	White
866 887	Zen Line Service Tray	White
866 383	Zen Line Sachet Tray 5 compartments	White
866 384	Zen Line Small Sachet Tray 4 compartments	White
866 888	Zen Line Main Tray	Ivory
866 890	Zen Line Service Tray	Ivory
866 388	Zen Line Sachet Tray 5 compartments	Ivory
866 389	Zen Line Small Sachet Tray 4 compartments	Ivory
866 891	Zen Line Main Tray	Black
866 893	Zen Line Service Tray	Black
866 393	Zen Line Sachet Tray 5 compartments	Black
866 394	Zen Line Small Sachet Tray 4 compartments	Black
866 886	Zen Line Main Tray with fixation hole	White
866 889	Zen Line Main Tray with fixation hole	Ivory
866 892	Zen Line Main Tray with fixation hole	Black



# Maestro

### General Specifications

- High quality melamine trays
- Heat and stain resistant
- Passed food safety standards (LFGB)/EN1186
- Available in black, white and ivory
- Main : H27/W197/L395mm
- Cup with Saucer : H105/L20mm
- Cup capacity 300ml



### Maestro Tray Fixation

A special Maestro main tray for kettle fixation. Fittable to all Duchesse and Zenith kettles.



Model	Designation	Color
866 1156	Maestro Main Tray	White
866 1157	Maestro Main Tray with fixation hole	White
866 1158	Maestro Cup and Saucer	White
866 1159	Maestro Main Tray	Ivory
866 1160	Maestro Main Tray with fixation hole	Ivory
866 1161	Maestro Cup and Saucer	Ivory
866 1162	Maestro Main Tray	Black
866 1163	Maestro Main Tray with fixation hole	Black
866 1164	Maestro Cup and Saucer	Black

# Charme

### General Specifications

- Quality PU leatherite
- Available in black and beige colors
- Main : H32/W290/L400mm
- Sachet : H63/W83/L161mm



Model	Designation	Color
866 1018	Charme Main Tray, PU leatherite	Black
866 1020	Charme Sachet Tray, PU leatherite	Black
866 1019	Charme Main Tray, PU leatherite	Beige
866 1021	Charme Sachet Tray, PU leatherite	Beige



# Trustee II

## General Specifications

- Code locking (4 to 6 digits)
- Power: 4 x 1.5V AA cells (AC optional)
- 20mm diameter double bolt lock, anti-tamper labyrinth
- Push button keypad, LED display, Buzzer
- Mechanical override available
- Electronic override by PSU Prolog Unit
- Security lock-out 15 min. after 4 failed attempts, audit trail functions
- Inside light using advanced LED strip double light
- Fastening: 4 bolts at base 2 bolts at back
- Compact: H195/ W355/ D270mm, powder coated in Black or White
- Laptop: H195/ W355/ D430mm, powder coated in Black or White



Prolog Service Unit for electronic emergency override, no battery power opening and audit functions.

Model	Designation	Color
TS II-195 CMP-BK	Trustee II Compact H195/W355/D270mm	Black
TS II-195 CMP-WH	Trustee II Compact H195/W355/D270mm	White
TS II-195 LPT-BK	Trustee II Laptop H195/W355/D430mm	Black
TS II-195 LPT-WH	Trustee II Laptop H195/W355/D430mm	White

# Custodian

## General Specifications

- Code locking (4 to 6 digits)
- Power: 4 x 1.5V AA cells
- 20mm diameter double bolt lock, anti-tamper labyrinth
- Push button lighted keypad panel, LED display, Buzzer
- Mechanical override available
- Electronic override by CSU Service Unit
- Security lock-out 15 min. after 4 failed attempts, audit trail functions
- Inside light
- Fastening: 4 bolts at base 2 bolts at back
- Laptop: H200/ W420/ D370mm
- Powder coated in Black



Model	Designation	Color
CS 200 LPT-BK	Custodian Laptop H200/W420/D370mm	Black

# Iconic Plus

## General Specifications

- Code locking (4 to 6 digits)
- Power: 4 x 1.5V AA cells (AC optional)
- 20mm diameter double bolt lock, anti-tamper labyrinth
- Push button, lighted keypad panel, LED display, Buzzer
- Mechanical override available
- Electronic override by PSU Prolog Unit
- Security lock-out 15 min. after 4 failed attempts, audit trail functions
- Inside light using advanced LED strip double light
- Fastening: 4 bolts at base 2 bolts at back
- Dimensions: H130/ W400/ D350mm, powder coated in Black or White



Prolog Service Unit for electronic emergency override, no battery power opening and audit functions.

Model	Designation	Color
ITO Plus 130 - BK	Iconic Plus top open H130/W400 /D350mm	Black
ITO Plus 130 - WH	Iconic Plus top open H130/W400 /D350mm	White



# Guardian Plus

### General Specifications

- Code locking (4 to 6 digits) & card locking
- Power: 4 x 1.5V AA cells (AC optional)
- 20mm diameter double bolt lock
- Anti-tamper labyrinth
- Push button, lighted keypad panel
- LED display, buzzer
- Mechanical override available
- Electronic override by PSU Prolog Unit
- Security lock-out 15 min. after 4 failed attempts, audit trail functions
- Inside light using advanced LED strip double light
- Fastening: 4 bolts at base 2 bolts at back



Model	Designation	Color
GSC Plus - 230 LPT - BK	Guardian Plus Laptop H230/W430/D410mm	Black
GSC Plus - 230 LPT - WH	Guardian Plus Laptop H230/W430/D410mm	White
GSC Plus - 230 SLPT - BK	Guardian Plus Superlaptop H230/W430/D500mm	Black
GSC Plus - 230 SLPT - WH	Guardian Plus Superlaptop H230/W430/D500mm	White



Model	Designation	Color
GDS Plus-210-BK	Guardian Plus Drawer H210/W430/D480mm	Black
GDS Plus-210-WH	Guardian Plus Drawer H210/W430/D480mm	White
GSC Plus - 535 Floor - BK	Guardian Plus Floor H535/W400/D480mm	Black
GSC Plus - 535 Floor - WH	Guardian Plus Floor H535/W400/D480mm	White



# Legacy

### General Specifications

- Code locking (4 to 6 digits) & card locking
- Power: 4 x 1.5V AA cells (AC optional)
- 20mm diameter double bolt lock, anti-tamper labyrinth
- Push button, lighted keypad panel, LED display, Buzzer
- Mechanical override available
- Electronic override by Legacy Service Unit LSU-C7
- Security lock-out 15 min. after 4 failed attempts, audit trail functions
- Inside light using advanced LED strip double light
- Fastening: 4 bolts at base 2 bolts at back
- Laptop: H230/ W430/ D410mm, powder coated in Black



Model	Designation	Color
LSC 230 LPT-BK	Legacy Laptop	Black



Card locking



Optional laptop charger at back of safe



Logger unit for electronic emergency override, no battery power opening and audit functions

# SD Boxes

### General Specifications

- Stainless steel doors
- Stainless steel clad construction
- Flexible configuration; in full and partial sections
- Each locker fitted with dual control lock
- Both custodian and renter key must be used together
- Each locker comes with inner metal container
- Inner container equipped with a hasp and staple
- Standard sizes are 3" x 10", 5" x 10", 10" x 10"



# Thermo-absorption Minibars

## General Specifications

- Thermo-electric absorption system
- Low energy consumption
- Ammonia-free operation
- Automatic defrosting
- All-round magnetic door insulation
- Interior LED, adjustable tempered glass shelf
- Adjustable thermostat for temperature control
- Quality lock included
- Reversible door
- Silent operation without vibration and noise
- CFC-free

## TA 25 Minibar



TA25 GD

### Capacity: 25 litres

Power 220~240V, 60W, 0.37kWh/24 hrs

Solid door dimensions H450/W403/D352mm

Glass door dimensions H450/W403/D343mm

Model	Designation	Color
TA25-BK	TA25, thermoelectric 25 litres, solid foam door	Black
TA25 GD-BK	TA25 GD, thermoelectric 25 litres, glass door	Black

## TA 30 Minibar



TA30 BK



TA30 GD

### Capacity: 30 litres

Power 220~240V, 60W, 0.39kWh/24 hrs

Dimensions H525/W380/D445mm

Solid door dimensions H475/W381/D446mm

Glass door dimensions H475/W381/D442mm

Model	Designation	Color
TA30-BK	TA30, thermoelectric 30 litres, solid foam door	Black
TA30 GD-BK	TA30 GD, thermoelectric 30 litres, glass door	Black

## TA 40 Minibar



TA40 BK



TA40 GD

### Capacity: 40 litres

Power 220~240V, 60W, 0.33kWh/24 hrs

Solid door dimensions H545/W403/D436mm

Glass door dimensions H545/W403/D431mm

Model	Designation	Color
TA40-BK	TA40, thermoelectric 40 litres, solid foam door	Black
TA40 GD-BK	TA40 GD, thermoelectric 40 litres, glass door	Black



## Heat Absorption Minibars

### DR 28N Minibar



DR28 N

#### General Specifications

- Heat absorption, automatic defrosting
- Completely silent; no moving parts
- All-round magnetic door insulation, adjustable shelf
- Interior LED light, adjustable shelf
- Quality lock included
- Reversible door

#### Capacity: 28 litres

Power 220V~240V, 60W, 0.75 kWh/24 hrs

Dimensions H440/ W400/ D390mm

Model	Designation	Color
DR 28N-BK	DR 28N minibar, 28 litre, solid foam door	Black

### FD 30 & FD 40 Minibar



FD30-BK



FD30-WH

#### Capacity: 30 litres

Power 220V~240V, 60W, 0.75 kWh/24 hrs - solid door

Power 220V~240V, 60W, 1.0 kWh/24 hrs - glass door

Dimensions H510/ W380/ D430mm

Model	Designation	Color
FD 30-BK	FD 30 litre, solid foam door	Black
FD 30-WH	FD 30 litre, solid foam door	White
FD 30 GD-BK	FD 30 litre, standard glass door	Black



FD40-BK



FD40 GD

#### Capacity: 40 litres

Power 220V~240V, 60W, 0.8 kWh/24 hrs - solid door

Power 220V~240V, 60W, 1.1 kWh/24 hrs - glass door

Dimensions H545/ W435/ D455mm

Model	Designation	Color
FD 40-BK	FD 40 litre, solid foam door	Black
FD 40-WH	FD 40 litre, solid foam door	White
FD 40 GD-BK	FD 40 litre, standard glass door	Black

### DR 50N Minibar



DR 50 N - BK



#### Capacity: 50 litres

Power 220V~240V, 60W, 1.1 kWh/24 hrs - solid door

Power 220V~240V, 60W, 1.4 kWh/24 hrs - glass door

Dimensions H570/ W455/ D480mm

Model	Designation	Color
DR 50N-BK	DR 50N minibar, 50 litre, solid foam door	Black
DR 50N GD-BK	DR 50N minibar, 50 litre, standard glass door	Black

# Heat Absorption Minibars (SCB)

## General Specifications

- Slim cooling board
- Heat absorption, automatic defrosting
- All-round magnetic door insulation
- Interior LED light, adjustable shelf
- Quality lock included
- Reversible door

## Slim Cooling Board

The DR Series comes with the latest in cooling board design that offers maximum cooling throughout the unit. In addition, the slim board offers additional storage space.

## DR 15 SCB



DR15 BK



### Capacity: 15 litres

Power 220V~240V, 60W, 0.75 kWh/24 hrs - solid door  
Dimensions H462/ W350/ D300mm

Model	Designation	Color
DR15 BK	DR 15 minibar, 15 litre, solid foam door	Black

## DR 30 & DR 40-SCB



DR 30 SCB



### Capacity: 30 litres

Power 220V~240V, 65W, 0.71 kWh/24 hrs  
Dimensions H500/ W402/ D420mm

Model	Designation	Color
DR30-SCB-BK	DR30 SCB minibar, 30 litre, solid foam door	Black
DR30 GD-SCB-BK	DR30 GD-SCB minibar, 30 litre, tempered glass door	Black



### Capacity: 40 litres

Power 220V~240V, 65W, 0.7 kWh/24 hrs  
Dimensions H560/ W402/ D440mm

Model	Designation	Color
DR40-SCB-BK	DR40 SCB minibar, 40 litre, solid foam door	Black
DR40 GD-SCB-BK	DR40 GD-SCB minibar, 40 litre, tempered glass door	Black

## DR 60 Minibar



DR60 BK



### Capacity: 60 litres

Power 220V~240V, 90W, 1.1 kWh/24 hrs  
Dimensions H605/ W460/ D480mm

Model	Designation	Color
DR60-BK	DR60 minibar, 60 litre, solid foam door	Black
DR60 GD-BK	DR60 GD minibar, 60 litre, tempered glass door	Black



## Venus II

### General Specifications

- Power 220V-240V 50/60Hz 1250W
- Automatic power off system;
- Horizontal after 30 seconds, vertical after 8 minutes
- Self cleaning function, fabric guide indicator
- Teflon-coated sole-plate
- Dry/ Steam/Spray/ Burst functions
- Spray capacity: 0.4~0.7g/ mins
- Steam capacity: 10~16g/ mins
- Powerful burst steam capacity: 0.4~0.7g/ mins
- Water capacity: Maximum 250ml



Model	Designation	Color
8 66 922	Venus II Iron, 1250W, teflon soleplate	Smoky Blue

## Vivo II & Vinci

### General Specifications

- Power 220V~240V 1600W/2000W/2200W
- Automatic power off system;
- Horizontal after 30 seconds, vertical after 8 minutes
- Anti-drip, anti-calc, self cleaning function
- Fabric guide indicator
- Stainless steel & Ceramic sole-plates
- Dry/ Steam/Spray/ Burst functions
- Spray capacity: 0.4~0.7g/ mins
- Steam capacity: 10~20g/ mins
- Powerful burst steam capacity: 0.4~0.7g/ mins
- Water capacity: Maximum 300ml



Model	Designation	Color
866 923-SS	Vivo II Iron, 1600W, S/S soleplate	Smoky Blue
866 923-CM	Vivo II Iron, 1600W, ceramic soleplate	Smoky Blue
866 923-SS (2000W)	Vivo II Iron, 2000W, S/S soleplate	Dark Grey
866 923-CM (2000W)	Vivo II Iron, 2000W, ceramic soleplate	Dark Grey
866 1115-SS	Vinci Iron, 2200W, S/S soleplate	Black
866 1115-CM	Vinci Iron, 2200W, ceramic soleplate	Black

## Iron Caddy

### General Specifications

- Designed to store iron
- Oversized to fit most irons
- Dimensions: H160/L300/W150mm
- Internal layer with heat resistant material
- Tested for heat rate up to 319°C (TUV 7191084733)



Model	Designation	Color
866 1022	Iron caddy, H160 / L300 / W150mm	Beige
866 1074	Iron caddy, H160 / L300 / W150mm	Black

# Ironing Boards

## General Specifications

- Multi-welded, heavy-duty construction
- Steel mesh top
- Bungee cover and fibre padding in one piece
- Luxurious 18mm overall thickness
- Cover tested for heat resistance (TUV)



- Folded size H1265/W335
- Iron surface 968/330mm
- Black board, black cover
- Dual side covers



- Folded size H1265/W335
- Iron surface 968/330mm
- Silver board, silver cover

## Prestige boards



- Folded size H1265/W335
- Iron surface 968/330mm
- Off-white board, toast cover



- Folded size H1265/W335
- Iron surface 968/330mm
- Off-white board, silver cover



- Folded size H1070/W315
- Iron surface 815/315mm
- Off-white board, silver cover



- Folded size H1470/W335mm
- Iron surface 1160/330mm
- Off-white board, silver cover

Model	Designation	Color
877 551	Prestige H1265/W335, off-white board	Toast
877 552	Prestige H1265/W335, off-white board	Silver
877 553	Prestige H1265/W335, off-white board	Silver
877 555	Prestige H1470/W335, off-white board	Silver
877 556	Prestige H1070/W315, off-white board	Silver
877 557	Prestige H1265/W335, black board	Black

## Deluxe board



### Dimensions/Color

- Folded size H1480/W365
- Iron surface 1348/330mm
- Off-white board, toast cover

## Armoire board



### Dimensions/Color

- Folded size H1310/W365
- Iron surface 1145/330mm
- Off-white board, silver cover

Model	Designation	Color
877 213	Deluxe 18mm toast cover & padding Folded H1480/W365, Board surface 1348/330mm	Toast
877 613	Armoire 18mm silver cover bungee & padding Folded H1310/W365, Board surface 1145/330mm	Silver



## Iron Organizer

### General Specifications

- Made of 18-gauge steel, double powder coated
- Adjustable 'wings' to hold iron securely
- Handy cord-wrap

Model	Designation	Color
877 001	Vivo Iron Organizer; Iron Holder & Board Hanger	Off-White
877 005	Venus Iron Organizer; Iron Holder & Board Hanger	Off-White



## Iron Guard



### General Specifications

- Made of special plastic material
- With heat-resistant buttons
- Hold iron securely, with cord hanger

Model	Designation	Color
866 1116	Vivo Iron Guard; Iron Holder & Board Hanger	Off-White
866 1117	Vivo Iron Guard; Iron Holder & Board Hanger	Black

## Ironguard Connection



8 66 1124-ICS



8 66 1123-ICS

Designed to prevent iron burns on carpets, bedspreads and even furniture. The system combines the iron, iron holder and board (includes board hanger) all into one single unit, making it necessary to use the board every time the iron is needed.

The board is equipped with a collapsible hook that allows hanging on the closet bar. Whether using the hook or the board hanger, the JVD Ironguard Connection provides a convenient and space-saving way to stow iron and board.

Size: Folded H1230/W340, Board surface 980/340mm, Max. Height 820mm



Iron not included.  
To be ordered separately.



Model	Designation	Color
866 1123-ICS	Ironguard Connection System consists of: 8661123 Iron board with hook, 18mm thick dual sides silver bungee cover & fibre padding in one-piece 8661116 Iron holder and board hanger, off white color	Off-White
866 1124-ICS	Ironguard Connection System consists of: 8661124 Iron board with hook, 18mm thick dual sides black bungee cover & fibre padding in one-piece 8661117 Iron holder and board hanger, black color	Black





# Galaxy & Cosmos

## General Specifications

- Wall-mounted or desktop
- 200mm diameter; single side
- Galaxy 3X, Cosmos 5X
- LED white light, 3 minutes auto-power off
- Battery operated; approx. 5 years battery life
- Brass with chrome finishing



Model	Designation	Color
866 769	Galaxy, LED White 3X, wall-mounted, 200mm diam., Brass	Chrome
866 920	Galaxy, LED White 3X, desktop, 200mm diam., Brass	Chrome
866 1136	Cosmos, LED White 5X, wall-mounted, 200mm diam., Brass	Chrome

# Lunaire

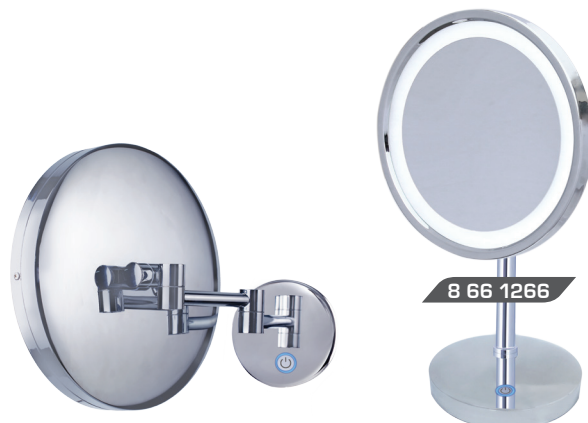
## General Specifications

- Single side magnified 3X, white LED
- AC 220V~240V input, 24V output
- Wall-mounted, double-arm
- Mirror diameter 200mm
- Brass with chrome finishing



Model	Designation	Color
866 311	Lunaire LED White 3X, wall-mounted, 200mm diam., Brass	Chrome

# Lunaire XL & Duet EVO



## General Specifications

- Single side magnified 5X, white LED
- AC 220V~240V input, 24V output
- Mirror diameter 250mm
- Touch power; blue night light
- 15 minutes auto-power off
- Wall-mounted or desktop
- Brass with chrome finishing

Model	Designation	Color
866 1266	Lunaire XL Evo, LED White 5X, desktop, 250mm, Brass	Chrome
866 1267	Lunaire XL Evo, LED White 5X, wall-mounted 250mm, Brass	Chrome
866 1268	Lunaire Duet Evo, LED White/Warm 5X, wall-mounted, 250mm, Brass	Chrome



## Deluxe Round

### General Specifications

- Double side round mirror; diameter 200mm
- One side normal, one side magnified 3X
- In wall-mounted double arm or desktop
- Desktop with adjustable height
- Brass with chrome finishing



## Deluxe Square

### General Specifications

- Single side square mirror
- Mirror diameter 200mm, magnified 3X
- In wall-mounted double arm or desktop
- Desktop with adjustable height
- Brass with chrome finishing



## Metal Racks



### General Specifications

- Folding metal luggage racks
- 4 durable straps plus 2 strengthening straps

Model	Designation	Color
866 069	Metal luggage rack, foldable	Chrome
866 506	Metal luggage rack with back-bar, foldable	Chrome
866 1122	Stainless Steel luggage rack, foldable	Chrome

## Ice Buckets

### General Specifications

- 1 litre, PU leatherette, complete with ice tong
- Internal of stainless steel material
- Single layer (8991029/8991028) H180/W140mm
- Double layer (8991030) H180/W150mm



## Ezzy Mechanical

### General Specifications

- Mechanical operation
- Cold rolled steel construction
- Anti-skid surface, anti roll-over
- Capacity 120 Kg
- Size H63/W315/D288mm



8 66 1144

## Équilibre digital

### General Specifications

- Digital LCD display in Kg or Lb
- Kg and Lb selector, auto-off
- 8mm tempered glass platform
- Capacity 180 Kg/396 Lb
- Size H40/W330/D330mm
- Operates on 1 lithium cell



8 66 926

## Credence Alt-digital

### General Specifications

- In alternate Kg and Lb display
- 8mm tempered glass platform
- Capacity 180 Kg/396 Lb
- Auto-off
- Size H28/W330/D330mm
- Operates on 1 lithium cell

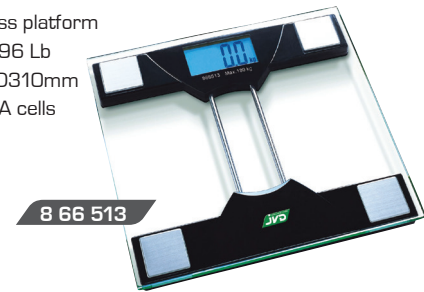


8 66 1025

## Gloire digital

### General Specifications

- Digital LCD display in Kg or Lb
- With backlight, auto-off
- 8mm tempered glass platform
- Capacity 180 Kg/396 Lb
- Size H40/W300/D310mm
- Operates on 2 x AAA cells



8 66 513

## Éclat digital

### General Specifications

- Slim at 22mm height
- 8mm tempered glass platform
- With backlight, auto-off
- Size H22/W300/D300mm
- Capacity 150 Kg/330 Lb
- Kg and LB selector
- Operates on 2 x AAA cells



8 66 753



8 66 754

## Élan Alt-digital

### General Specifications

- Ultra-slim at 18/20mm
- Reinforced 6mm tempered glass
- In alternate Kg and Lb display
- With backlight, auto-power off
- Capacity 180 Kg/396 Lb
- Élan Classic uses 2 x AAA cells
- Élan Deluxe uses 4 x AAA cells



8 66 1147



8 66 1149

Model	Designation	Color
866 1146	Élan Classic, H18/W300/D260mm	Silver
866 1147	Élan Classic, H18/W300/D260mm	Champagne
866 1149	Élan Deluxe, H22/W310/D310mm	Silver
866 1150	Élan Deluxe, H22/W310/D310mm	Champagne



## Radiance torch



8 66 932 BK



8 66 933 WH

### General Specifications

- Auto-switch on when removed from holder
- Auto-switch off when placed into holder
- Operates on 2 x D cells, with flashing night light
- Black with single white LED, white with single warm bulb

Model	Designation	Color
866 932 BK	Radiance torch, white LED	Black
866 933 WH	Radiance torch, warm bulb	White

## Brilliance torch



8 66 1227



### General Specifications

- Auto-switch on when removed from holder
- Auto-switch off when placed into holder
- 13 nos. energy-saving white LED light
- Operates on 3 x AA cells
- With flashing night light (2 x AAA cells)

Model	Designation	Color
866 1227	Brilliance torch, 13 white LED, night light	Black

## Illuminor RC



8 66 581 BK-AC



8 66 582-RC

### General Specifications

- Auto-switch on when removed from holder
- Auto-switch off when placed into holder
- 13 nos. energy-saving white LED light
- 3 x AA rechargeable cells, with adaptor

Model	Designation	Color
866 581 BK-RC	Illuminor RC, chargeable batteries & adaptor	Black
866 582 WH-RC	Illuminor RC, chargeable batteries & adaptor	White

## Tissue boxes

8 99 960



### General Specifications

- In melamine/ABS material
- Square H150/ W138/ L138mm

Model	Designation	Color
899 960	Tissue dispenser, square, melamine/ABS	Black
899 961	Tissue dispenser, square, melamine/ABS	Ivory

### General Specifications

- In PU leatherette finishing
- With magnetic base



8 99 1038

Model	Designation	Color
899 1035 BK	Tissue box square, PU, H140/W128/L128mm	Black
899 1036 BEI	Tissue box square, PU, H140/W128/L128mm	Beige
899 1037 BK	Tissue box rectangle, PU, H70/W128/L250mm	Black
899 1038 BEI	Tissue box rectangle, PU, H70/W128/L250mm	Beige

## Zouk



### General Specifications

- Room-specific bluetooth speaker system
- High quality stereo sound system
- Single day alarm erases alarms set by previous guests
- Auto-power cutover
- Large LCD-time display, temperature reading (°C & °F)
- 2 USB ports, AUX
- FM radio (20 channels), various dimming levels
- Snooze bar, attractive backlit buttons for easy viewing
- Special Operator Key to adjust hotel settings
- Optional anti-theft cable
- Dimensions H121/W140/D144mm

Model	Designation	Color
903 305	Zouk stereo alarm clock, FM, USB charging, Bluetooth	Black
903 204-ATL	Anti-theft Device with adjustable lasso	Black

## Nova



### General Specifications

- High quality stereo sound system
- Single day alarm erases alarms set by previous guests
- Auto-power cutover
- Large LCD-time display, temperature reading (°C & °F)
- 2 USB ports, AUX
- FM radio (20 channels), various dimming levels
- Snooze bar, attractive backlit buttons for easy viewing
- Special Operator Key to adjust hotel settings
- Optional anti-theft cable
- Dimensions H121/W140/D144mm

Model	Designation	Color
903 306	Nova stereo alarm clock, FM, USB charging	Black
903 204-ATL	Anti-theft Device with adjustable lasso	Black

## Jazz Blu



### General Specifications

- Bluetooth stereo alarm, dual alarm functions
- FM radio (20 channels), 1 USB port for charging
- Snooze and sleep functions
- Backlit LCD with dimming levels
- 3.5mm AUX cable included
- Dimensions H100/W138/D138mm

Model	Designation	Color
903 303-BK	Jazz Blu stereo, alarm, charger, bluetooth	Black
903 304-WH	Jazz Blu stereo, alarm, charger, bluetooth	White

## Mambo II



### General Specifications

- Stereo alarm, dual alarm functions
- FM radio (10 channels), 2 USBs port for charging
- Docking station charges Iphone 5, 6
- Snooze and sleep functions
- Backlit LCD with dimming levels
- 3.5mm AUX cable included
- Optional anti-theft security wire
- Dimensions H115/W145/D125mm

Model	Designation	Color
903 203 BK-UPL	Mambo II, stereo, alarm, charging station	Black
903 204-ATL	Anti-theft Device with adjustable lasso	NA



## Pedal bins

### General Specifications

- Great aesthetics
- Available in various capacities
- Ergonomic handle, fire-safe construction
- Plastic inner liner included



Model	Designation	Color
WB-300 307	Pedal bin S/S, 3L, H250/ W175mm	Polished
WB-300 308	Pedal bin S/S, 5L, H270/ W200mm	Polished
WB-300 309	Pedal bin S/S, 12L, H400/ W248mm	Polished
WB-300 310	Pedal bin S/S, 3L, H275/ W192/ 240mm	Matt
WB-300 311	Pedal bin S/S, 5L, H290/ W220/ 260mm	Matt

## Soft-close pedal bins

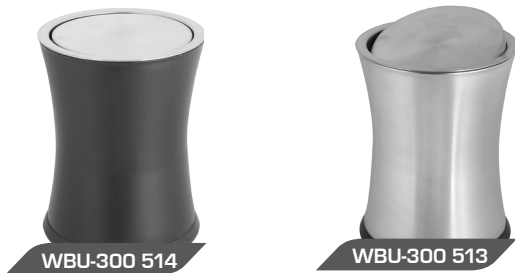


### General Specifications

- Excellent finishing in non-fingerprint stainless steel
- Soft close, silent lid closure
- 5 litre capacity
- Available in stainless steel and PP lids
- Plastic inner liner included

Model	Designation	Color
WBE-300330	Pedal bin S/S, 5L, H290/W205mm, S/S lid	Matt
WBE-300331	Pedal bin S/S, 5L, H290/W205mm, PP lid	Matt

## Swing top bins



### General Specifications

- Swing top lid
- In stainless steel and powder coated black
- 8 litre capacity
- Dimensions H260/ W200 mm

Model	Designation	Color
WBU-300 513	Swing top bin, 8L, H260/ W200 mm	Stainless Steel
WBU-300 514	Swing top bin, 8L, H260/ W200 mm	Black

## Single Layer bin



### General Specifications

- Straw mat material
- Round, single layer
- 10 litre capacity

Model	Designation	Color
WB-300 326	Round, single layer, 10L, H255/ W230 mm	Chrome

## FR bins



### General Specifications

- In durable PP and PVD leatherite material
- Available in various capacities

Model	Designation	Color
WB-300 315	FR Bins, 6.6L, H260/ W170/ L240mm	Black
WB-300 316	FR Bins, 13.2L, H310/ W210/ L290mm	Black
WBU-300 526	FR Bins, 10L, H285/W55/L235mm, Leatherette	Black
WBU-300 527	FR Bins, 10L, H285/W55/L235mm, Leatherette	Beige

## Recycle bins



### General Specifications

- Outer bin in powder coated finish
- Inner recycle bins in PP, light and dark grey colors
- Round 10 litre, rectangle 14 litre capacity
- With printed recycle and non-recycle insignias
- Easy to remove and clean

Model	Designation	Color
899 1229	Round 10 ltr, H270/W225mm, with 2 recycle liners	Black
899 1261	Rectangle 14 ltr, H290/W210/L270mm, with 2 recycle liners	Black

## Double layer bins

### General Specifications

- Outer bin in powder coated and leatherette
- Inner liner included
- 10 litre capacity
- Available in Round and Oval shapes



Model	Designation	Color
WBU-300 515	Round, double, H270/ W225mm, leatherette finishing	Black
WBU-300 516	Round, double, H270/ W225mm, powder-coated	Black
WBU-300 517	Round, double, H270/ W225mm, powder-coated	Beige
WBU-300 518	Round, double, H270/ W225mm, leatherette finishing	Brown
WBU-300 519	Oval, double, H270/ W190/ L260mm, leatherette finishing	Black
WBU-300 520	Oval, double, H270/ W190/ L260mm, powder-coated	Black
WBU-300 521	Oval, double, H270/ W190/ L260mm, powder-coated	Beige
WBU-300 522	Oval, double, H270/ W190/ L260mm, leatherette finishing	Brown



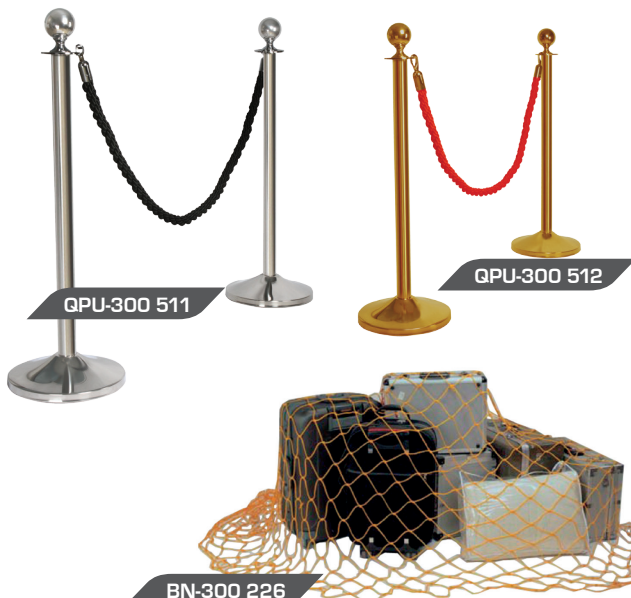
### General Specifications

- Square frustrum double layer
- Inner container included
- 10 litre capacity
- Dimensions H340/ W140mm

### General Specifications

- Rectangle, double layer
- Inner liner included
- 7.6 litre capacity
- Available in powder coated black or beige color

## Queue poles & Baggage nets



### General Specifications

- Available in stainless steel polish and gold plating
- Belt material : Braided Rope
- Belt length : 1500mm
- Pole height : 1000mm
- Base diameter : 320mm
- Weight 11 kg
- Ship unassembled

Model	Designation	Color
GPU-300 511	Queue pole, stainless steel polish	Silver
GPU-300 512	Queue pole, stainless steel gold plating	Gold
QRU-300 533	Braided rope, 1500mm, silver hook	Black
QRU-300 534	Braided rope, 1500mm, gold hook	Red

### General Specifications

- Strong nylon in brass gold color

Model	Designation	Color
BNU-300510	Baggage Net, Nylon, 3 x 3 metre	Gold
BN-300 226	Baggage Net, Nylon, 4 x 4 metre	Gold



## Luggage carts



LCU-300 506



LCU-300 507

### General Specifications

- Stainless steel polish, 38mm diameter
- Deck carpeted with full wrap-around rubber bumper
- 8" solid wheels with 2 fixed and 2 swivel
- 250mm ground clearance
- Capacity load up to 300 Kg
- Dimensions H900/ L1050/ W610mm
- Weight 34 kg
- Ship assembled

Model	Designation	Color
LCU-300 506	Cart, S/S 38mm, 8" solid wheels, black carpet	Silver Chrome
LCU-300 507	Cart, S/S 38mm, 8" solid wheels, red carpet	Gold Chrome



LCU-300 504



LCU-300 505

### General Specifications

- Stainless steel in Titanium finish, 38mm diameter
- Deck carpeted with full wrap-around rubber bumper
- 8" pneumatic rubber wheels with 2 fixed and 2 swivel
- 250mm ground clearance
- Capacity load up to 350 Kg
- Dimensions H1900/ L1140/ W670mm
- Weight 40 kg
- Ship unassembled

Model	Designation	Color
LCU-300 504	Cart, S/S 38mm, 8" pneumatic wheels, black carpet	Silver Chrome
LCU-300 505	Cart, S/S 38mm, 8" pneumatic wheels, red carpet	Gold Chrome

## Birdcage



LCU-300 502



LCU-300 503

### General Specifications

- Stainless steel, 38mm diameter
- Deck carpeted with full wrap-around rubber bumper
- 8" solid wheels with 2 fixed and 2 swivel
- 250mm ground clearance
- Capacity load up to 300 Kg
- Dimensions H1860/ L1050/ W610mm
- Weight 38 kg
- Ship unassembled

Model	Designation	Color
LCU-300 502	Birdcage, S/S 38mm, 8" solid wheels, black carpet	Silver Chrome
LCU-300 503	Birdcage, S/S 38mm, 8" solid wheels, red carpet	Gold Chrome



LCU-300 501



LCU-300 500

### General Specifications

- Stainless steel in titanium, 50mm diameter
- Deck carpeted with full wrap-around rubber bumper
- 8" pneumatic rubber wheels with 2 fixed and 2 swivel
- 250mm ground clearance
- Capacity load up to 350 Kg
- Dimensions H1950/ L1140/ W670mm
- Weight 53 kg
- Ship unassembled

Model	Designation	Color
LCU-300 500	Birdcage, S/S 50mm, 8" pneumatic wheels, black carpet	Silver Chrome
LCU-300 501	Birdcage, S/S 50mm, 8" pneumatic wheels, red carpet	Gold Chrome



## Hand trucks



### General Specifications

- Stainless steel, 32mm diameter
- Foldable platform
- Carpet can be easily replaced
- 8" pneumatic rubber wheels
- Capacity load up to 100 kg
- Dimensions H1220/ L400/ W500mm
- Weight 14 kg
- Ship assembled

Model	Designation	Color
HT-300 113	Hand Truck, S/S 35mm, 8" pneumatic wheels, red carpet	Gold Chrome
HT-300 114	Hand Truck, S/S 35mm, 8" pneumatic wheels, red carpet	Silver Chrome
HT-300 117	Hand Truck, S/S 35mm, 8" pneumatic wheels, black carpet	Silver Chrome



### General Specifications

- Stainless steel brushed, 32mm diameter
- Foldable platform
- Carpet can be easily replaced
- 10" pneumatic rubber wheels
- Capacity load up to 200 kg
- Dimensions H1200/ L400/ W500mm
- Weight 16.5 kg
- Ship assembled

Model	Designation	Color
HTU-300 508	Hand Truck, S/S 32mm, 10" pneumatic wheels, black carpet	Silver Chrome
HTU-300 509	Hand Truck, S/S 32mm, 10" pneumatic wheels, red carpet	Gold Chrome

## Self service trolley



### General Specifications

- Aluminium construction
- Deck with front rubber bumper
- 7" rubber wheels
- Automatic brake when release handle
- With optional locking device
- Capacity load up to 250 Kg
- Dimensions H1050mm/L950/W670mm
- Weight 19 kg
- Ship assembled

## Linen trolleys



### General Specifications

- Rust resistant black metal tube frame
- Bag included
- Dimensions H920/ W560/ L940mm
- Ship unassembled

### General Specifications

- Metal steel powder coated frame
- Bag included
- Dimensions H900/ W650/ L850mm
- Ship assembled



## X-carts



LT-300 211

### General Specifications

- Strong polypropylene, foldable
- Vinyl bag included
- Dimensions H950/ W660/ L710mm
- Ship assembled



LT-300 212



LTU-300 530

### General Specifications

- Foldable, nylon bag included
- LT-300212 : Rust resistant chrome metal tube frame
- Dimensions H1000/ W620/ L600mm
- LTU-300530 : Stainless steel frame
- Dimensions H880/ W500/ L800mm
- Ship assembled

## Multi-purpose carts



MP 300 227/8



MP-300 220

### General Specifications

- Ergonomic, easy grip handles
- Smooth surfaces and rounded corners
- Lightweight aluminium tubes for easy maneuverability
- Quiet, mark-resistant swivel wheels
- Black refuse bins included

Model	Designation	Color
MP-300 227	Serving Trolley, Small, H935/ W410/ L815mm	Grey
MP-300 228	Serving Trolley, Large, H950/ W500/ L1035mm	Grey



MP-300 229

### General Specifications

- Designed for multi-purpose usage
- Complete with tool basket/organizer MP-300229
- Strong polypropylene, of solid wheels
- Vinyl bag included
- Weight 15 Kg
- Ship unassembled

Model	Designation	Color
MP-300 220	Multi-purpose Trolley	Grey
MP-300 229	Tool Basket/Organiser	Grey

## Buckets, wringers floor signs, broom



BW-300 218



BW-300 219



DB-300 222



FS-300 223



FS-300 224



FS-300 225

### General Specifications

- Strong polypropylene construction
- Plastic non-marking wheels
- Hazard warning printed on bucket

Model	Designation	Color
BW-300 215	Single Bucket/ Wringer combo 20L	Yellow
BW-300 218	Single Bucket/ Wringer combo 36L	Blue
BW-300 219	Double Buckets/ Wringer, 34L, with trolley	Grey

### General Specifications

- Make a strong statement about safety
- Efficient to limit and avoid risks of accident
- Warning messages on both sides
- Foldable to minimize storage space

Model	Designation	Color
FS-300 223	Floor Sign "CAUTION"	Yellow
FS-300 224	Floor Sign "CAUTION WET FLOOR"	Yellow
FS-300 225	Floor Sign "CLEANING IN PROGRESS"	Yellow

# Full carts

## General Specifications

- Metal construction, epoxy powder coated
- Complete with top Organizer
- Convenient 3 fixed shelves as standard
- Full wrap-around rubber bumper
- 4 x 4" revolving corner bumper wheels
- Solid 8" wheels with 2 fixed and 2 swivels
- Capacity load up to 100 kg
- Weight 42 kg
- Partial assembly for shipment



HC-300 241-AG



HC-300 241-DTC-BN

Model	Designation	Color
HC-300 241-AG	Housekeeping cart, metal, with bags	Anthracite Grey
HC-300 241-BN	Housekeeping cart, metal, with bags	Brown



HC-300 241-DTC-BD-AG

Optional lockable base drawer

## General Specifications

- Complete with top Organizer
- Lockable top cover
- With lockable 2-leaf doors
- Optional lockable base drawer (BD)
- All locks are with key-alike system



Full bag comes with one zipper bag and one pouch with zipper on each side

3/4 bag with zipper

Model	Designation	Color
HC-300 241-DTC-AG	Housekeeping metal cart, with bags, top cover and door	Anthracite Grey
HC-300 241-DTC-BN	Housekeeping metal cart, with bags, top cover and door	Brown
HC-300 241-DTC-BD-AG	Housekeeping metal cart, with bags, top cover, door and base drawer	Anthracite Grey
HC-300 241-DTC-BD-BN	Housekeeping metal cart, with bags, top cover, door and base drawer	Brown

# Half carts



HC-300 242-BN



HC-300 242-DTC-AG

Model	Designation	Color
HC-300 242-AG	Half-cart, metal, with bag	Anthracite Grey
HC-300 242-DTC-AG	Half-cart, metal, with bag, top cover, door	Anthracite Grey
HC-300 242-BN	Half-cart, metal, with bag	Brown
HC-300 242-DTC-BN	Half-cart, metal, with bag, top cover, door	Brown

# Stainless steel cart



HC-300 243-SS

## General Specifications

- Stainless steel construction
- Complete with top Organizer
- Convenient 3 fixed shelves as standard
- Full wrap-around rubber bumper
- 4 x 4" revolving corner bumper wheels
- Solid 8" wheels with 2 fixed and 2 swivels
- Capacity load up to 100 kg
- Weight 55 kg
- Partial assembly for shipment

Model	Designation	Color
HC-300 243-SS	Housekeeping cart, stainless steel, with bags	Stainless steel



## Swing top & pedal



ST-300 405

### General Specifications

- Push lid
- Plastic construction
- Durable, impact and rust resistant
- Easy to clean and maintain
- 25L - H440/ W280/ L340mm
- 40L - H610/ W370/ L450mm

Model	Designation	Color
ST-300 405	Swing top bin, 25 litres	Grey
ST-300 406	Swing top bin, 40 litres	Grey



PC-300 404

### General Specifications

- Step Pedal Opening
- Plastic construction
- Durable, impact and rust resistant
- Easy to clean and maintain
- 60L - H673/ W412/ L504mm

Model	Designation	Color
PC-300 404	Pedal Container, 60 litres	Grey

## Austral



811 125

### General Specifications

- Robust; Polycarbonate
- Universal motor
- Automatic operation
- Power 230V 50/60Hz 2100W
- Airflow 250 m<sup>3</sup>/h
- Sound 62Dba, Wt 1.8 Kg
- IP23 Class II
- EU, OC safety standards

Model	Designation	Color
811 125	Austral hand dryer, 2100W	Off white

## Zephyr



811 017

### General Specifications

- Robust; ABS-PC
- Low power consumption Universal motor
- Automatic operation
- Power 230 50/60Hz 2100W
- Airflow 190 m<sup>3</sup>/h with sound level 65 dBA
- IP23 Class II, EU, OC safety standards

Model	Designation	Color
811 017	Zephyr hand dryer, 2100W	white

## Airwave



811 707

### General Specifications

- Robust ABS
- Airflow 110 m<sup>3</sup>/h
- Automatic temperature adjustment system
- Power 230V 50/60Hz 1400W
- Accessible air filter for easy cleaning
- Thermal protection
- Electrical insulation Class 1, IP 21
- EU, OC safety standards

Model	Designation	Color
811 707	Airwave hand dryer, 1400W	White

## Tornado



8 11 251



8 11 292

### General Specifications

- Robust; ABS-PC, Composite anti-vandalism
- Automatic, low power consumption induction-rotor motor
- Power 230V 50/60Hz 2600W
- Airflow 300 m<sup>3</sup>/h, decibel 60 dBA
- Class II, IP 23 safety index,
- EU, OC safety standards

Model	Designation	Color
811 251	Anti-flammable, Anti-Vandalism, 2600W	Off white
811 292	Anti-flammable, Anti-Vandalism, 2600W	Bright chrome

## Master II



### General Specifications

- Epoxy strong aluminium casing
- Automatic, low power consumption
- Power 230V 50/60Hz 2600W
- Airflow 300 m<sup>3</sup>/h, decibel 60 dBA
- Class II, IP 23 safety index
- EU, OC safety standards

Model	Designation	Color
811 413	Master II hand dryers, 2600W	Off white
811 414	Master II hand dryers, 2600W	Bright chrome

## Stell'Air & Exp'Air



### General Specifications

- Stell'Air in ABS cover, Exp'Air in aluminium
- Patented circular air blow system
- Power 230V 50/60Hz 1200W
- Low power consumption
- Superpower drying time max 15 seconds
- Air speed 600 km/h
- Anti-Bacteria treatment on surfaces and filter
- Easy to clean water tank
- Class II insulation, IP24

Model	Designation	Color
8 11 962	Stell'Air, auto, ABS, 1200W	White
8 11 791	Exp'Air, auto, Aluminium, 1200W	White

## Alphadry



### General Specifications

- Strong ABS cover
- Superpower drying time max 15 seconds
- Power 230V 50/60Hz 1650W
- Air speed 350 km/h
- Vandalism-proof
- Thermal safety
- Air filter
- Easy to clean water tank
- Class I insulation, IP24

Model	Designation	Color
811 905	Alphadry hand dryer, 1650W	White
811 906	Alphadry hand dryer, 1650W	Metalic Grey

## Diamant & Rubis



### General Specifications

- Latest silicone pump technology
- Removable tank for easy cleaning
- Quick refilling, lockable with key
- HACCP standards

Model	Designation	Color
844 296	Diamant soap dispenser 300ml	Transparent
844 297	Diamant soap dispenser 800ml	Transparent
844 738	Rubis soap dispenser 800ml	White



## Cleanline gel & mousse



### General Specifications

- 800ml capacity
- Level warning indicator
- Removable tank for easy cleaning
- Quick refilling, lockable with key
- HACCP standards

Model	Designation	Color
844 478	Cleanline mousse 800ml (foam/lather soap)	White
844 479	Cleanline gel 800ml	White

## Saphir automatic



### General Specifications

- Fully automatic
- Infra-red detection without any contact
- Controlled soap flow
- Single dose 3ml; 1 dose every 3 seconds
- Capacity 1100ml
- Lockable with key
- Transparent level viewer
- Power 4XX 1.5V LR6 batteries

Model	Designation	Color
844 397	Saphir automatic 1100ml, battery operated	White

## Savinox

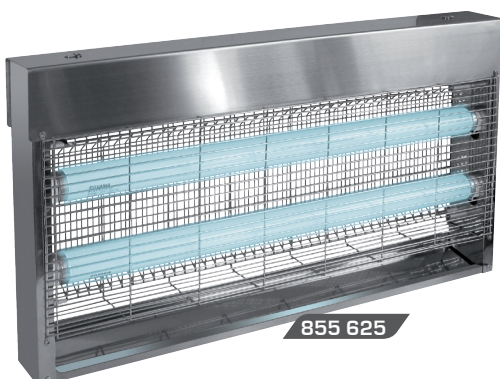


### General Specifications

- Designed for extreme conditions
- Metal body and cover
- Reinforced mounting system
- In 450ml and 850ml capacity

Model	Designation	Color
844 253	Savinox, stainless steel, 450ml	Bright Chrome
844 254	Savinox, stainless steel, 850ml	Bright Chrome

## Insect killers



### General Specifications

- High quality true UV lights
- Stainless steel construction
- Voltage 230V 50 Hz; 30W and 40W models
- Protected area: 80/ 120m<sup>2</sup>
- Grid voltage 3800 V/ 10 mA
- On/off switch, power cord with plug
- Installation: wall mounted or suspended
- Electric insulation Class I, IP20

Model	Designation	Color
855 625	Professional, stainless steel 30W (2x15W)	Stainless Steel
855 627	Professional, stainless steel 40W (2x20W)	Stainless Steel

# It is our privilege to serve

(Some of our recent Asia/Middle East projects)

## AUSTRALIA

Avenue Hotel Canberra  
Bannisters Boutique Resort on Tallwood  
Citigate Hotel Melbourne  
DoubleTree by Hilton, Melbourne  
Intercontinental Hotels  
Holiday Inn Express  
Jupiters Casino Gold Coast  
Marriott Pier One Autograph Collection  
Palazzo Versace Gold Coast  
Primus Hotel Sydney  
Radisson Blu Sydney Hotel  
Sofitel Wentworth Sydney  
Swissotel Sydney  
Tank Stream Hotel, Sydney by St Giles Group  
The Ovolo Blue Hotel, Sydney

## BANGLADESH

Best Western, Dhaka  
Grand Sultan Resort & Golf  
Holiday Inn Dhaka  
Le Meridien Dhaka  
Radisson Blu, Dhaka  
Royal Park Hotel  
Sheraton Dhaka  
Sheltech HRC Hotel  
Six Seasons Hotel, Dhaka  
Westin Dhaka Hotel

## CAMBODIA

Apsara Angkor Hotel & Resorts, Siem reap  
Le Meridien Angkor Siem reap  
Naga World Hotels & Casino  
Park Hyatt, Siem reap  
Prince D'Angkor Siem reap  
Somadevi Angkor Resort Siem reap  
Sunway Hotel, Phnom Penh  
TEAV Boutique  
Tree Palace Hotel, Kep

## CHINA

Ascott Guangzhou, Shanghai, Xian  
Grand Mercure Shanghai  
Grand Hyatt Sanya  
Holiday Inn Beijing, Suzhou & others  
IBIS Beijing, Shanghai and others  
JW Marriott Beijing  
Kempinski Hotel Wuxi, Sanya, Suzhou  
Marriott Yiwu  
Mercure Beijing Downtown & Shanghai  
New World Centre Hotel, Shenyang  
Sofitel Suzhou  
Somerset Chongqing, Tianjin, Suzhou  
The Ritz-Carlton Beijing  
The Portman Ritz-Carlton Shanghai

## GUAM & SAIPAN

Aqua Resort Saipan  
Dusit Thani Guam  
Hilton Guam Resort & Spa  
Hyatt Regency Guam & Saipan  
Lotte Hotel Guam  
The Hyatt Hotel, Guam  
The Westin Hotel, Guam  
World Resort saipan

## INDIA

Accor (Sofitel, Novotel, IBIS)  
Carlson Hotels  
Courtyard Marriott, Gurgaon/Mumbai  
Country Inn and Suites Delhi/Gurgaon  
Duet India Hotels  
Dusit Delhi  
Fairmont & Swissotel  
Four Points Delhi/Jaipur/Pune/Mumbai  
Hilton Chennai/Delhi/Gurgaon  
Holiday Inn Aerocity, Amritsar, Jaipur  
Hyatt Aerocity Delhi, Pune, Mumbai  
ITC Hotels  
IHG (Intercontinental, Crowne, Holiday Inn)  
JW Marriott Bangalore/Mussorie/Jaipur/Kochi  
Lemon Tree Hotels & Red Fox all India  
Ramada Delhi, Gurgaon, Powai Mumbai  
Starwood Hotels (Westin, Sheraton, Aloft)

Taj Mahal Palace & Taj hotels  
The Lalit, New Delhi, The Lalit Mumbai

## HONG KONG

Auberage Hotel and resort  
Best Western  
Conrad Hong Kong  
Harbour View Hotel - Macau  
Hard Rock - City of Dreams  
Land Mark Hotel - Macau  
Ovolo Hotels  
Rosedale By the Park  
Studio City Macau  
Venetian Macau  
Wynn Macau

## INDONESIA

Accor - Sofitel, Pullman, Novotel, Mercure  
Alila hotels  
Aryaduta hotels  
Ascott, Somerset & Citadines  
Borobudur Hotel Jakarta  
IHG (Intercontinental, Crowne, Holiday Inn)  
Conrad Resort Bali  
Doubletree Jakarta  
Fairmont Jakarta  
Golden Tulip  
Grand Hyatt Bali, Bandung, Jakarta  
Hilton Bandung  
Hyatt Regency Yogyakarta  
Indigo Seminyak  
Mulia hotels  
Ritz Carlton Nusa Dua Bali  
Starwood Hotels (Westin, Sheraton, Aloft)

## MALDIVES

Anantara  
Four Season  
Grand Hyatt's  
John Keells - Cinnamon & Chaaya Resorts  
Jumeirah Resorts  
Lily Resorts  
Lux Resorts & Spas  
Merriott's International  
Velassaru Resorts

## MYAMMAR

Bay View Hotel  
Best Western Green Hill Yangon  
Kempinski Nay Pyi Taw  
Novotel Yangon  
Novotel Inle Lake Hotel  
Park Royal Hotel, Yangon  
Royal Kumudra Hotel, Nay Pyi Taw  
Sakura Residence  
Sky Palace Hotel, Nay Pyi Taw  
Savoy Hotel  
Sedona Hotel

## KOREA

Amiga Hotel, Seoul  
Courtyard Marriot, Seoul  
Grand Intercontinental Seoul  
Hyatt Regency, Jeju  
Imperial Palace Hotel, Seoul  
Lotte Hotels  
Millenium Seoul Hilton Hotel  
Park Hyatt Busan, Seoul  
Ritz Carlton, Seoul  
Ramada Plaza, Suwon, Jeju, Dongtan  
Sheraton Songdu

## MALAYSIA

Accor - Sofitel, Pullman, Novotel, Mercure, IBIS  
Acapella Suites Hotel  
Aloft Kuala Lumpur  
Berjaya Times Square KL  
Ascot, Citadine & Somerset  
First World Genting Highland  
Hotel Equatorial  
Le Meridien Kuala Lumpur  
Mandarin Oriental KL  
Marriott Resort Putrajaya  
Sheraton Four Point Kuching

Sunway Resort Hotel & Spa  
The Danna Langkawi  
The Saujana Hotel KL

## MAURITIUS & SEYCHELLES

Azuri Resort  
Constance Belle Mare Plage  
Centara Resort  
Heritage Le Telfair  
Holiday Inn Airport Hotel  
Intercontinental  
LUX Grand Gaube, LUX Bellemare  
La Palmeraie Hotel  
Le Meridien  
Sofitel Imperial  
Crown Beach Plaza, seychelles  
Ephelia Resorts, seychelles  
Lemuria Resorts, seychelles

## NEPAL

Fishtail Lodge Hotel, Pokhara  
Hotel Del Annapurna  
Hotel Himalaya  
Hyatt Regency Kathmandu  
Hotel Tibet International  
Hotel Yak & Yeti  
Meghauri Safari Resort, Chitwan  
Radisson Hotel Kathmandu  
Hotel Shangri-La Kathmandu  
Soaltee Crown Plaza  
The Everest Hotel  
Temple Tree Hotel, Pokhara  
Waterfront Resort, Pokhara

## PHILIPPINES

Ascott Hotels (BGC, Makati)  
Crown Tower, City Of Dreams, Manila  
Fairmont & Raffles, Makati  
Holiday Inn Clark  
Holiday Inn, Ayala, Makati  
Hyatt, City Of Dreams, Manila  
Marriott Hotel, Newport City  
New World Hotel, Makati  
Nobu, City Of Dreams, Manila  
Park Inn Hotel, Davao  
Radisson Blu, Cebu  
Resorts World, Newport Boulevard, Manila  
Shangri-La Fort, BGC  
Shangri-La Boracay  
Sofitel Hotel, Manila

## SINGAPORE

Accor - Sofitel, Novotel, Mercure, IBIS  
Amara Hotel, Amara Sentosa  
Ascott, Citadines & Somerset  
Carlton Hotel, Carlton City Hotel  
Conrad Millenium  
Cophorne Hotels  
Fairmount Hotel  
Fraser Serviced Apartments  
Fragrance Hotels  
Furama City & Riverfront  
Grand Hyatt  
Hilton Singapore  
Hotel Jen @ Orchard Gate way  
Intercontinental & Crowne Plaza  
Mandarin & Oriental Hotels  
Marina Sands Marriot Singapore  
Oasia Hotels  
Park Hotels  
Parkroyal Hotels  
Raffles Hotel  
Resort World Hotels  
Sheraton Towers  
Swissotel Hotels  
The Fullerton Hotel

## SRI LANKA

Aitken Spence Hotels  
Amaya Hotels  
Banyan Tree  
Centara Resort & Spa  
Citrus Leisure Hotels  
Connaissance Hotels

Galle Face Hotels  
Heritance Hotels  
Hilton Hotels  
John Keells-Cinnamon & Chaaya  
Jet wing Hotels  
LOLC Hotels & Resorts  
Marriott's International  
Serandib Group Hotels  
Uga Resorts

## THAILAND

Accor - Sofitel, Novotel, IBIS  
Ascott, Citadines & Somerset  
Amara Bangkok  
Ascott, Citadines & Somerset  
Avani Bangkok  
Centara Grand Hotels  
Courtyard Marriott Bangkok  
Conrad Samui  
Four Point Sheraton Bangkok  
Grand Hyatt Erawan  
Hilton Hua Hin, Pattaya  
Holiday Inn Silom, Pattaya  
IHG - Intercontinental, Crowne  
JW marriott Bangkok  
Mandarin Oriental Bangkok

## TAIWAN

Aloft Taipei  
Chateau Beach Resort Hotel  
Courtyard by Marriott Taipei  
Evergreen International hotel  
Hotel Royal, Chiao Hsi Spa  
Lakeshore Hotels  
Marriott Taipei  
Onsen Papawaqa Resort Hotel  
Park City hotels  
The Riviera Hotel, Taipei

## Middle-east

Al Safir Hotel, Bahrain  
Amari Hotel, Qatar  
Ain Palace Hotel, UAE  
Banyan Tree Al Wadi, UAE  
Best Western Hotel, Riyadh  
Cove Rotana, UAE  
Crowne Plaza, Bahrain  
Crowne Plaza Hotel, Riyadh  
Courtyard Marriot Hotel - Olaya Riyadh  
Grand Hyatt, Qatar  
Haward Golden Tulip, Bahrain  
Holiday Inn Hotel, Riyadh  
Hyatt Regency Hotel, Riyadh  
Le Meridien, Abu Dhabi  
Millenium Hotel, Shahrjah  
Millenium Hotel, Riyadh  
Pullman Dubai Mall of Emirates  
Radisson Blu Yas Island  
Ramada Hotel Dubai  
Sharacco Marriot Hotel-Riyadh  
Swiss-Belhotel, Bahrain  
The Boutique Hotel, Qatar  
Tulip Inn Hotel, Bahrain  
W Hotel, Qatar

## VIETNAM

Accor - Sofitel, Novotel, IBIS  
Fusion Maia Sam Son  
Hilton Opera, Hanoi  
IHG (Intercontinental, Crowne, Holiday Inn)  
Le Meridien Saigon  
Liberty Hotels  
Lotte Hotel & Apartment Hanoi  
M Gallery Saigon Hotel  
Novotel Phu Quoc  
Park Hyatt Saigon  
Premium Vinpearl Resorts & Hotels  
Riverier Cam Ranh resort  
Reverier Saigon hotel  
Pullman Vung Tau  
Sacom Tuyen Lam Da Lat  
Sheraton Hanoi  
Vinpearl Gold Land Resort Villas  
Wyndham Legend Halong

# Premier fabricant Français d'accessories Hôtelières



JVD is the first French manufacturer of hotel accessories and has provided innovative solutions for more than 30 years. You'll find JVD installations throughout the world in over 80 countries; added value products that work harder, smarter and better than any alternatives.

JVD builds its future by safeguarding Quality, Competitiveness and the French know-how. Our in-house research, design and development has continuously develop good technology, new techniques and materials to further enhance our product offering, satisfying customers around the world. Products and services that improve productivity and convenience, lower costs, protect customers' assets and respect our environment. This approach has enabled us to remain a leader and low-cost producer, gaining market share in our core markets internationally.

## Enjoy the JVD hospitality difference:

**Focus, expertise, support and the finest equipment - all from one source**

Headquartered in France, JVD support goes far beyond the right products. JVD's manufacturing concerns, subsidiaries and distribution network are globally extensive.

In short, JVD's approach begins with the finest equipment available and follows through with the most comprehensive service and support in the industry. And for more than three decades, the JVD name has stood for top quality and service and it still does today.



JVD commercial facility in Nantes, France



As an industrial designer, JVD has been a fantastic platform for me to express myself. We belong to the hospitality business which is very dynamic, with everchanging landscapes for a better guest and operator experience. We have to constantly innovate with new concepts and designs to keep up with times. Every successful product developed during the last 30 years involved constant research, feedback and collaboration amongst hotel clients, hoteliers, and our professional distribution channels. **The success of a product is after all a human experience!**

Jean-Guy De Russe  
JVD Chief Design

## Your JVD Distributor



### Feedback

We at JVD value what you have to say about our products and policies. If you have any comments and feedbacks, please contact us by sending an email to [enquiry@jvd.com.sg](mailto:enquiry@jvd.com.sg)

### Logo & Trademark Disclaimer:

Product names, logos, brands and other trademarks featured in this catalogue are the property of their respective trademark holders. It is for reference only and serves no other purposes.



Respectful of the protection of the environment, JVD invites our partners and customers to give their email address to receive all information in electronic version